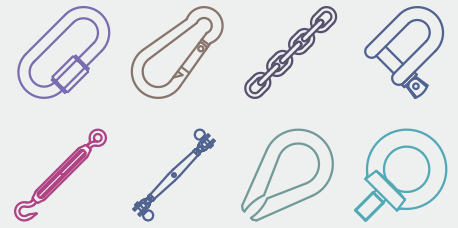


Stainless

Wire Rope Fittings
Marine Hardware
Glass Fittings

绳索配件
船用五金
幕墙配件



ANSON

天津安森不锈钢制品有限公司
Tianjin Anson Stainless Steel Products Co., Ltd

Company Profile 公司简介



Tianjin Anson Stainless Steel Products Co., Ltd was founded in 1987, which has over 20 years' export experience, specialized in the production and sale of stainless products. Thanks to the long term efforts of all our employees, we have researched and developed more than 2000 kinds of stainless products including rigging hard ware, wire rope accessories, machinery parts, curtain wall fittings, pipe fittings and all kinds of products made by precision casting and stamping. We have obtained ISO9001:2008 certificate since 2003 and we always insist on high quality products to meet the demand of customers. All these products are sold throughout China, and have been exported to over 20 countries since 2000, such as America, Germany, Italy, Japan, Canada etc.

Our factory is located in Machinery & Industrial Zone of Anyang, Henan province, China, covers an area of 8500 square meters. We have built standardized plant area, living and office area, with more than 200 employees. In recent years, Anson company introduced of advanced production and testing equipment, and actively improve the production and testing equipment, and actively improve the production process, paid more attention to energy-saving emission reduction, improve production efficiency, improve labor condition, and now we have been developed into a comprehensive enterprise integrate development of stainless steel products, production, sales and market development of stainless steel products, production, sales and market development of stainless steel products, production, sales and market development as a whole, and rely on high-quality products quality, reasonable price, timely delivery, good after sale service and many core advantage to become a well-known stainless steel products suppliers.

Anson Stainless is proud to advance together with its partners because customers' satisfaction is our main task.



天津安森不锈钢制品有限公司创办于1987年，具有20多年的出口经验，专业从事不锈钢制品的生产和销售。感谢全体员工长期不懈的努力，我们研究和开发了超过2000种不锈钢产品，包括五金索具，钢丝绳配件，机械配件，幕墙配件，管道配件及各种精密铸造和冲牙制品，并于2003年通过了ISO9001:2008质量管理体系认证。我们始终坚持以高质量的产品及良好的售后服务来满足客户的需求，产品销往全国各地，并直接出口到美国，德国，意大利，日本，加拿大等二十多个国家和地区。

公司地处河南省安阳市，占地8500平方米，包括生活及办公区，拥有员工200余名。近年来，安森公司通过不断探索市场需求，引入先进的生产和检测设备，积极改进生产工艺，注重节能减排，提高生产效率，改善劳工条件，现已发展为集不锈钢产品开发、生产、销售和市场开拓为一体的综合性企业，并依靠优质稳定的产品质量、合理的价格、及时的交货期、良好的售后服务等诸多核心优势成为国内知名的不锈钢制品供应商。

安森公司本着“质量第一，信誉至上”的宗旨，愿与国内外合作伙伴一起齐头并进，共创美好未来！

Company Profile 公司简介

- 拥有超过2000种产品，品种仍在不断增加中
- 超大库存，满足客户订单量小品种多的需求，降低客户库存成本
- 一流的生产管理体系使我们能够有效缩短交货周期
- 严格执行ISO9001:2008质量管理体系，确保出厂产品合格率100%
- 我们可为您提供专业的铸造及冲压非标件定制方案



We have obtained ISO9001 certificate since 2003



INNOV-X DELTA XRF ANALYZER



- We have developed more than 2000 items and our product range is still growing.
- With high inventory level, we could save your stocking cost, especially for small quantity orders with various of items.
- First-class production management system makes lead time much shorter.
- Strictly following the ISO9001:2008, we promise to supply all products with high quality.
- OEM is available. Glad to offer our professional solutions for Customized products made by invest casting and punching.

ANSON

TOP LEADER IN STAINLESS PRODUCTS



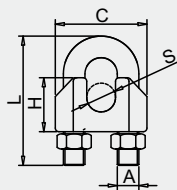
CONTENTS 目录

■ Wire Rope Accessories 钢丝绳配件	----- 1-10	
■ Turnbuckles 花篮螺丝	-----11-19	
■ Shackles And Swivels 卸扣、旋转环	-----20-24	
■ Hooks And Quick Links 钩子、连接环	-----25-32	
■ Bolts And Nuts 螺栓、螺母	-----33-41	
■ Rings And Pins 环、销	-----42-44	
■ Pad Eyes, Chains And Blocks 眼板、链条、滑轮	-----45-52	
■ Pipe Fittings And Cleats 管道配件、栓船柱	-----53-56	
■ Glass Fittings 玻璃配件	-----57-60	
■ Customized Products 定制产品	-----61-66	

101

DIN741钢丝绳卡头
DIN741 Wire Rope Clip
DIN741 Drahtseilklemme

AISI304/AISI316

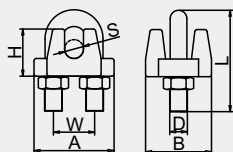


Size(ΦS)	A	C	H	L	WT
mm	mm	mm	mm	mm	kg
2	M3	15.5	10	19	0.007
3	M4	20	10	23	0.012
4	M4	20	10	23	0.013
5	M5	23	10	29	0.017
6	M6	26	11	33.5	0.028
8	M6	29	15	35	0.037
10	M8	34	17	44	0.068
12	M10	40	20.5	55	0.124
14	M10	43	21.5	56	0.136
16	M12	49	25	67	0.211
18	M12	52	30	79	0.260
20	M12	52	30	79	0.261
22	M12	60	34	88	0.345
24	M12	67	23	86	0.354
26	M14	65	37	110	0.531
30	M16	74	43	112	0.661
32	M14	74	43	115	0.572

102

JIS日式钢丝绳卡头
JIS Wire Rope Clip
JIS Drahtseilklemme

AISI304/AISI316

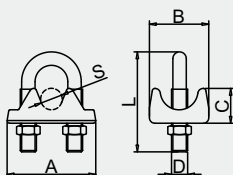


Size(ΦS)	A	B	H	D	L	W	WT
mm	mm	mm	mm	mm	mm	mm	kg
2	15	12.5	10	M3	20	8	0.007
3	14	14	10	M3	20	8	0.007
4	19	18	14	M4	23	10.5	0.019
5	22	20	16	M5	29	12	0.025
6	27	22	17.5	M6	34	14	0.042
8	34	28	20.7	M8	43	17.5	0.086
9	40	31	22.3	M10	53	21	0.128
10	43	34.5	23.7	M10	52	21	0.155
12	50	39	27.5	M12	63	25.6	0.235
14	52	45	31	M12	68	28.6	0.285
16	60	48	35	M14	80	30	0.408
19	62	53	39	M14	85	35	0.478

103

意式钢丝绳卡头
Italian Type Wire Rope Clip
Italienische Drahtseilklemme

AISI304/AISI316

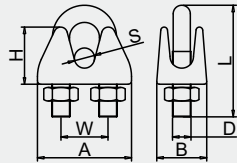


Size(ΦS)	A	B	C	D	L	WT
mm	mm	mm	mm	mm	mm	kg
4	22	14	8	M4	22	0.010
5	24	16	9	M5	24	0.020
6	30	18	11	M6	33	0.030
8	33	20	12	M6	35	0.040
10	37	22	14	M8	43	0.070
12	45	25	16	M10	54	0.120
14	46	27	18	M10	54	0.150
16	53	30	20	M10	65	0.200
18	55	31	21	M12	80	0.240
20	58	33	22	M12	80	0.270
22	64	34	23	M12	85	0.310

104

德式重型钢丝绳卡头
Heavy type Wire Rope Clip
Schwer Drahtseilklemme

AISI304/AISI316

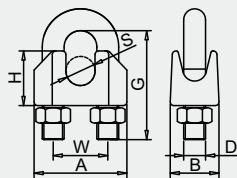


Size(Φ S)	A	B	H	D	L	W	WT
mm	mm	mm	mm	mm	mm	mm	kg
2	16	9.5	10	M3	18	7	0.009
3	18	9.5	11	M3	19	8	0.010
4	21	10	13	M4	22	10	0.017
5	25	12	15	M5	28	12	0.027
6	28	15	17	M6	34	14	0.043
8	31	17	20	M6	38	15	0.060
10	38	19	23	M8	45	19	0.093
13	47	25	25.5	M10	56	25	0.172

105

美式卡头
US Type Wire Rope Clip
US-Typ Drahtseilklemme

AISI304/AISI316



Size(Φ S)	A	B	H	D	G	W	WT
inch	mm	mm	mm	inch	mm	mm	kg
1/8	22	14	11	3/16	20	11	0.015
3/16	26	15	13	1/4	24	13.5	0.030
1/4	32	18.5	15	5/16	31.5	17	0.050
5/16	35	20	16	5/16	34	18.3	0.060
3/8	40.5	22	22	3/8	42	22.5	0.100
7/16	43	23	22	3/8	43	24	0.115
1/2	49	26	23	7/16	54	27	0.175
9/16	52.5	26.5	27	1/2	55	30	0.325
5/8	57.5	28.5	28	1/2	60	33	0.350
3/4	61	32	34	9/16	69	34.5	0.360
7/8	71	37	38	5/8	78	41	0.530
1	77.5	42	43	5/8	87.5	45.5	0.680



正确使用方法
The right way

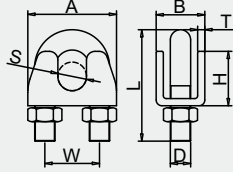


错误使用方法
The wrong way

106

板式冲压卡头
Stamping Type Wire Rope Clip
Stempeln Drahtseilklemme

AISI304/AISI316

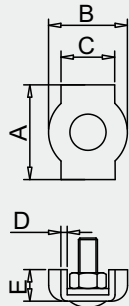


Size(Φ S)	A	B	H	D	L	T	W	WT
mm	mm	mm	mm	mm	mm	mm	mm	kg
3	14	7.5	8	M3	20	1	8	0.004
4	19	10	10.5	M4	22	1.5	10	0.009
5	22	12	12	M5	26	2	11.5	0.015
6	26	13	15	M6	34	2	14	0.026
8	31	17	19	M8	41	2.5	17	0.054

107

钢丝绳单夹
Simplex Wire Rope Clip
Simplex-Drahtseilklemme

AISI304/AISI316

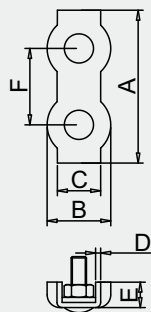


Rope Φ	A	B	C	D	E	Bolt	WT
mm	mm	mm	mm	mm	mm	mm	kg
2	15	12	7	1	5	M4×13	0.004
3	17	15	9	1	6	M4×13	0.006
4	20	19	12	1.5	6	M5×17	0.010
5	25	20	14	1.5	8	M5×17	0.013
6	30	25	17	2	9.5	M6×22	0.027
8	38	31	23	2	10	M8×29	0.046
10	48	38	27	2.5	14	M10×31	0.090

108

钢丝绳双夹
Duplex Wire Rope Clip
Duplex-Drahtseilklemme

AISI304/AISI316

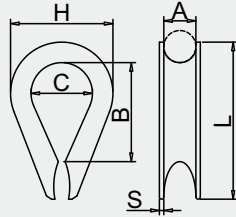


Rope Φ	A	B	C	D	E	F	Bolt	WT
mm	mm	mm	mm	mm	mm	mm	mm	kg
2	15	12	7	1	5	15	M4×13	0.008
3	17	15	9	1	6	16	M4×13	0.011
4	20	19	12	1.5	6	20	M5×17	0.021
5	25	20	14	1.5	8	25	M5×17	0.026
6	30	25	17	2	9.5	30	M6×22	0.052
8	38	31	23	2	10	38	M8×29	0.091
10	48	38	27	2.5	14	48	M10×31	0.180

109

欧式套环
European Wire Rope Thimble
Europäisch Kausche

AISI304/AISI316

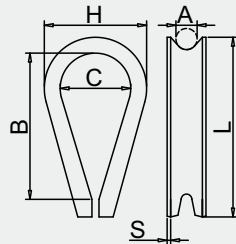


Rope(ΦA)	B	C	H	S	L	WT
mm	mm	mm	mm	mm	mm	kg
2	14	7	11.5	0.8	20	0.001
3	16	10	16	0.8	23	0.002
4	18	11	17	1	25	0.003
5	22	12.5	20	1	32	0.005
6	25	14	22	1	37	0.007
8	34	18	29	1.5	48	0.017
10	43	24	37	1.5	56	0.026
12	48	27.5	42	1.5	67	0.040
14	50	33	50	2	72	0.060
16	64	38	55	2	85	0.079
18	68	41	61	2.5	93	0.124
20	72	43	65	2.5	101	0.143
22	77	43	67	2.5	106	0.172
24	77	49	73	2.5	110	0.198
26	80	53	80	3	120	0.275
28	90	55	85	3	130	0.330
32	94	62	90	3	134	0.370

110

美式薄型套环G411
US Type Wire Thimble G411
US-Typ Kausche G411

AISI304/AISI316

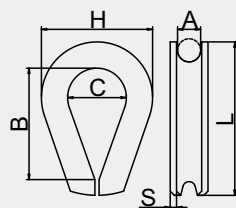


Rope(ΦA)	B	C	H	S	L	WT
inch	inch	inch	inch	inch	inch	lbs
1/8	1.31	.69	1.06	.05	1.94	0.025
3/16	1.31	.69	1.06	.05	1.94	0.025
1/4	1.31	.69	1.06	.05	1.94	0.037
5/16	1.50	.81	1.25	.05	2.13	0.037
3/8	1.63	.94	1.47	.06	2.38	0.062
1/2	1.88	1.13	1.75	.08	2.75	0.125
5/8	2.25	1.38	2.38	.13	3.50	0.250
3/4	2.50	1.63	2.69	.14	3.75	0.500
7/8	3.50	1.88	3.19	.16	5.00	0.850
1	4.25	2.50	3.75	.16	6.69	1.000
11/8-11/4	4.50	2.75	4.31	.22	6.25	1.750

111

美式重型套环G414
US Type Wire Thimble G414
US-Typ Kausche G414

AISI304/AISI316

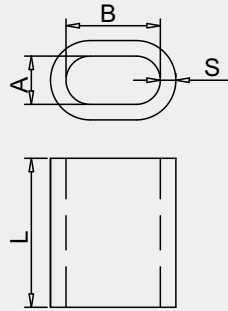


Rope(ΦA)	B	C	H	S	L	WT
inch	inch	inch	inch	inch	inch	lbs
1/4	1.63	.88	1.50	.06	2.19	0.067
5/16	1.88	1.06	1.81	.08	2.50	0.112
3/8	2.13	1.13	2.13	.11	2.88	0.250
7/16	2.38	1.25	2.38	.13	3.25	0.300
1/2	2.75	1.50	2.75	.14	3.63	0.510
9/16	2.75	1.50	2.69	.14	3.63	0.510
5/8	3.25	1.75	3.13	.16	4.25	0.750
3/4	3.75	2.00	3.81	.22	5.00	1.470
7/8	4.25	2.25	4.25	.22	5.50	1.750
1	4.50	2.50	4.94	.25	6.13	2.750
11/8-11/4	5.13	2.88	5.88	.25	7.00	4.000

112

椭圆形铝套
Oval Aluminium Ferrule
Oval Aluminium-Pressklemme

Aluminium

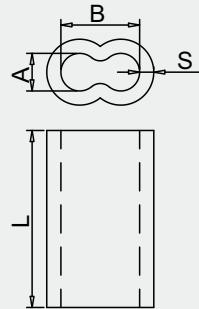


RopeΦ	A	B	S	L	WT
mm	mm	mm	mm	mm	kg/1000PCS
1	1.2	2.4	0.65	5	0.100
1.5	1.7	3.2	0.53	7	0.176
2	2.2	4.3	0.95	7.3	0.290
2.5	2.6	5.3	1	9.2	0.440
3	3.4	6.6	1.1	11	0.910
4	4.4	8.8	1.7	14	1.630
5	5.4	10.2	2.3	18	3.620
6	6.8	13.4	2.3	21	5.870
8	9	17.6	2.9	27.8	12.960
10	10.9	21.8	3.9	35	24.100
12	13.7	26.7	4.7	40	44.200
14	15.3	30.6	5.8	49	73.500
16	17.5	35	6.7	56	111.000
18	19.6	39.2	7.6	63	156.000
20	21.7	43.4	8.4	70	217.000

113

8字形铝套
8-Shape Aluminium Ferrule
8-Aluminium-Pressklemme

Aluminium



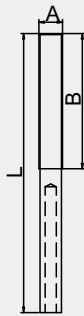
RopeΦ	A	B	S	L	WT
mm	mm	mm	mm	mm	kg/1000PCS
1.5	1.6	3.7	1.2	9	0.433
2	2.4	5.2	1	9	0.645
2.5	3.2	6.5	1.5	12.1	1.450
3	3.6	7.3	1.9	15.3	2.700
4	5.1	9.9	2	16	3.670
5	5.5	11.5	2	22	7.180
6	6.7	13.7	2.2	26	11.760
8	8.5	17.8	3.2	30	20.940
10	11.5	23.1	3.2	33.1	28.180
12	13.4	27.7	4	40	80.150



114

接线螺杆
Swage Stud
Drahtseil-Walzterminal

AISI304/AISI316

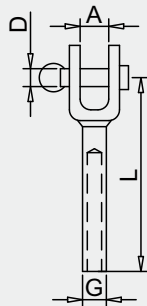


RopeΦ	A	B	L
mm	mm	mm	mm
3	M6	45	100
4	M8	53	117
5	M10	60	130
6	M12	76	162
8	M16	100	195
10	M20	115	230

115

叉型接线器
Fork Terminal
Gabelterminal

AISI304/AISI316

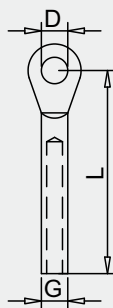


RopeΦ	A	D	G	L
mm	mm	mm	mm	mm
3	9	5	6.5	65
4	10	6	7.5	77
5	10	8	9	88
6	11	10	12.5	106
8	14	12	16	145
10	23	15	18	150

116

眼型接线器
Eye Terminal
Augterminal

AISI304/AISI316



RopeΦ	D	G	L
mm	mm	mm	mm
3	6.5	6.5	55
4	8.5	7.5	65
5	10.5	9	80
6	12.5	12.5	94
8	14.5	16	124
10	16.5	18	142

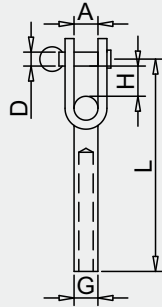


117

活动式接线器
Toggle Terminal
Toggle-Terminal

AISI304/AISI316

RopeΦ	A	H	D	G	L
mm	mm	mm	mm	mm	mm
3	7	15	6	6.5	75
4	10	20	8	7.5	89
5	12	25	9	9	104
6	13	30	12	12.5	127
8	17	40	16	16	163
10	20	45	19	18	184

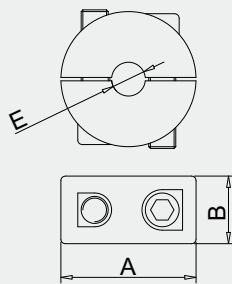


118

圆形绳夹
Wire Rope Clamp Ring
Drahtseil-Klemmring

AISI304/AISI316

RopeΦ	A	B	E
mm	mm	mm	mm
2	15	10	2
3	15	10	3
4	15	10	4
5	20	10	5
6	20	10	6



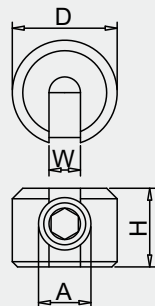


119

一字绳夹
Wire Rope Clamp
Drahtseil-klemme

AISI304/AISI316

RopeΦ	A	H	D	W
mm	mm	mm	mm	mm
2	M4	8	10	2.3
3	M8	12	15	3.3
4	M8	12	15	4.3
5	M10	15	20	5.3
6	M10	15	20	6.3

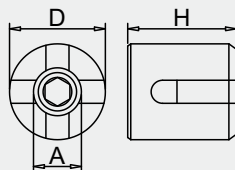


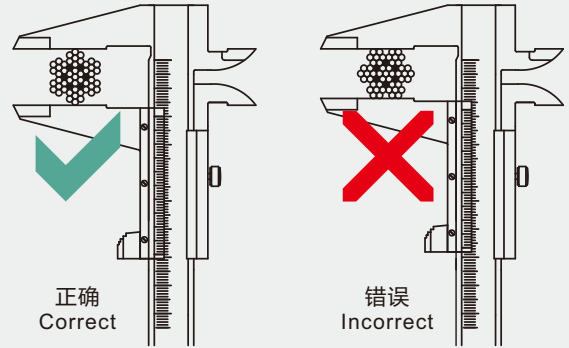
120

十字绳夹
Wire Rope Cross Clamp
Drahtseil-Kreuzklemme

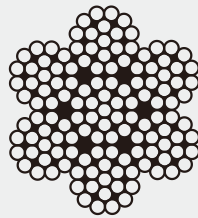
AISI304/AISI316

RopeΦ	A	H	D
mm	mm	mm	mm
2	M10	18	17
3	M10	19	17
4	M12	21	20
5	M12	23	20
6	M12	25	20

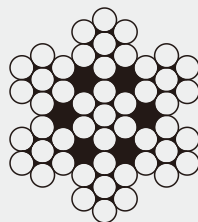




121	钢丝绳 7 x 19 Wire Rope 7 x 19 Drahtseil 7 x 19	AISI304/AISI316		
		Diameter	BL	WT
		mm	kg	kg/100m
		1	66	0.410
		1.5	157	0.923
		2	265	1.630
		2.5	402	2.550
		3	530	3.680
		4	940	6.530
		5	1470	10.210
		6	2880	14.500
		8	3760	26.140
		10	5210	40.840
		12	7500	58.810
		14	10200	80.050
		16	13300	103.000
		20	20800	160.000



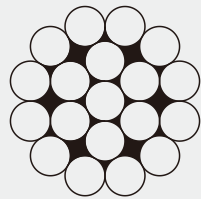
122	钢丝绳 7 x 7 Wire Rope 7 x 7 Drahtseil 7 x 7	AISI304/AISI316		
		Diameter	BL	WT
		mm	kg	kg/100m
		1	63	0.410
		1.5	148	0.920
		2	294	1.630
		2.5	440	2.550
		3	571	3.680
		4	1020	6.450
		5	1590	10.200
		6	2290	14.500
		8	4250	26.100
		10	5630	40.540
		12	8110	58.210



123

钢丝绳 1 x 19
Wire Rope 1 x 19
Drahtseil 1 x 19

AISI304/AISI316



Diameter	BL	WT
mm	kg	kg/100m
1	80	0.500
1.5	180	1.140
2	330	2.000
2.5	510	3.130
3	740	1.500
4	1300	8.000
5	2000	12.500
6	2900	18.000
8	5200	32.100
10	8200	50.000
12	11900	72.000

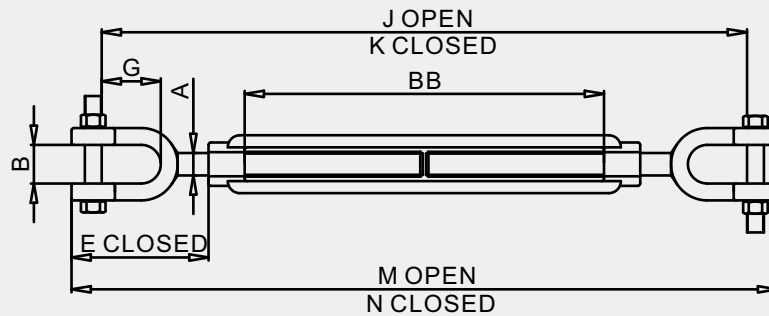


201

美式花篮螺丝叉叉型

US Type Turnbuckle Fork And Fork
US-Typ Spannschloss Gabel-Gabel

AISI304/AISI316



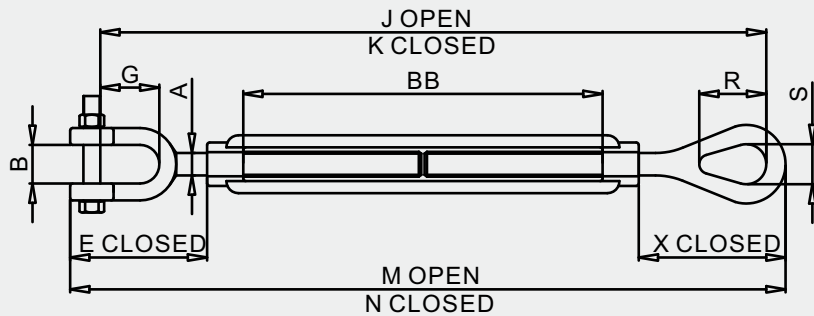
Size	A	B	E	G	J	K	M	N	BB	WLL	WT
inch	inch	inch	inch	inch	inch	inch	inch	inch	inch	lbs	lbs
1/4×4	.25	.41	1.58	.62	10.90	6.90	11.90	7.90	4.00	500	.36
5/16×4-1/2	.31	.47	1.98	.87	12.36	8.36	13.90	9.40	4.50	800	.52
3/8×6	.38	.50	2.12	.87	16.14	10.14	17.38	11.38	6.00	1200	.81
1/2×6	.50	.63	2.75	1.06	17.50	11.50	19.00	13.00	6.00	2200	1.50
1/2×9	.50	.63	2.75	1.06	23.50	14.50	25.00	16.00	9.00	2200	1.74
1/2×12	.50	.63	2.75	1.06	29.50	17.50	31.00	19.00	12.00	2200	2.46
5/8×6	.63	.75	3.50	1.31	18.80	12.80	20.88	14.88	6.00	3500	2.72
5/8×9	.63	.75	3.50	1.31	24.80	15.80	26.88	17.88	9.00	3500	3.24
5/8×12	.63	.75	3.50	1.31	30.80	18.80	32.88	20.88	12.00	3500	3.74
3/4×6	.75	.94	4.18	1.50	20.00	14.00	22.60	16.60	6.00	5200	4.11
3/4×9	.75	.94	4.18	1.50	26.00	17.00	28.60	19.60	9.00	5200	5.10
3/4×12	.75	.94	4.18	1.50	32.00	20.00	34.60	22.60	12.00	5200	5.65
3/4×18	.75	.94	4.18	1.50	44.00	26.00	46.60	28.60	18.00	5200	7.00
7/8×12	.88	1.13	4.85	1.75	33.36	21.36	36.32	24.32	12.00	7200	8.17
7/8×18	.88	1.13	4.85	1.75	43.36	27.36	48.32	30.32	18.00	7200	9.96
1×6	1.00	1.19	5.53	2.06	22.72	16.72	26.06	20.06	6.00	10000	8.56
1×12	1.00	1.19	5.53	2.06	34.72	22.72	38.06	26.06	12.00	10000	12.00
1×18	1.00	1.19	5.53	2.06	46.72	28.72	50.06	32.06	18.00	10000	14.00
1×24	1.00	1.19	5.53	2.06	58.72	34.72	62.06	38.06	24.00	10000	17.00
1-1/4×12	1.25	1.75	7.21	2.81	37.34	25.34	41.54	29.54	12.00	15200	21.50
1-1/4×18	1.25	1.75	7.21	2.81	49.34	31.34	53.54	35.54	18.00	15200	24.25
1-1/4×24	1.25	1.75	7.21	2.81	61.34	37.34	65.54	41.54	24.00	15200	28.00
1-1/2×12	1.50	2.06	7.88	2.81	38.50	26.50	43.50	31.50	12.00	21400	30.50
1-1/2×18	1.50	2.06	7.88	2.81	50.50	32.50	55.50	37.50	18.00	21400	36.75
1-1/2×24	1.50	2.06	7.88	2.81	62.50	38.50	67.50	43.50	24.00	21400	40.67
1-3/4×18	1.75	2.38	9.40	3.38	53.38	35.38	59.18	41.18	18.00	28000	55.04
1-3/4×24	1.75	2.38	9.40	3.38	65.38	41.38	71.18	47.18	24.00	28000	63.36
2×24	2.00	2.50	11.86	3.69	69.54	45.54	76.72	52.12	24.00	37000	94.25
2-1/2×24	2.50	2.88	13.56	4.44	72.98	48.98	82.18	58.18	24.00	60000	165.00
2-3/4×24	2.75	3.50	15.22	4.19	74.75	50.75	85.50	61.50	24.00	75000	198.00

202

美式花篮螺丝圈叉型

US Type Turnbuckle Eye And Fork
US-Typ Spannschloss Öse-Gabel

AISI304/AISI316



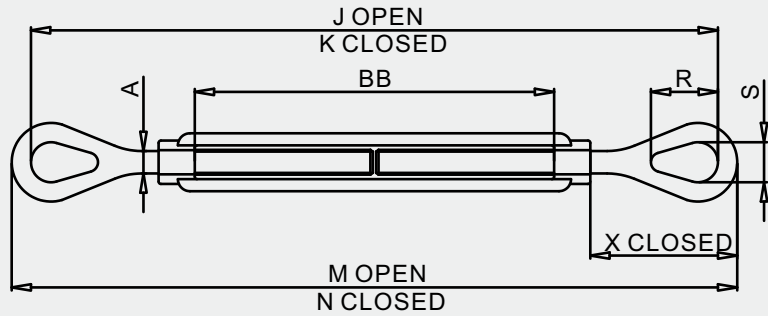
Size	A	B	E	G	J	K	M	N	BB	R	S	X	WLL	WT
inch	inch	inch	inch	inch	inch	inch	inch	inch	inch	inch	inch	inch	lbs	lbs
1/4×4	.25	.41	1.58	.62	11.35	7.35	12.07	8.07	4.00	.78	.34	1.75	500	.32
5/16×4-1/2	.31	.47	1.98	.87	13.71	8.71	14.01	9.51	4.50	.94	.44	2.09	800	.47
3/8×6	.38	.50	2.12	.87	16.81	10.81	17.77	11.77	6.00	1.12	.53	2.52	1200	.76
1/2×6	.50	.63	2.75	1.06	18.29	12.29	19.48	13.48	6.00	1.44	.72	3.23	2200	1.53
1/2×9	.50	.63	2.75	1.06	24.29	15.29	25.48	16.48	9.00	1.44	.72	3.23	2200	1.71
1/2×12	.50	.63	2.75	1.06	30.29	18.29	31.48	19.48	12.00	1.44	.72	3.23	2200	2.06
5/8×6	.63	.75	3.50	1.31	19.74	13.74	21.28	15.28	6.00	1.75	.88	3.90	3500	2.35
5/8×9	.63	.75	3.50	1.31	25.74	16.74	27.28	18.28	9.00	1.75	.88	3.90	3500	3.06
5/8×12	.63	.75	3.50	1.31	31.74	19.74	33.28	21.28	12.00	1.75	.88	3.90	3500	3.78
3/4×6	.75	.94	4.18	1.50	21.19	15.19	13.11	17.11	6.00	2.09	1.00	4.69	5200	4.00
3/4×9	.75	.94	4.18	1.50	27.19	18.19	29.11	20.11	9.00	2.09	1.00	4.69	5200	4.75
3/4×12	.75	.94	4.18	1.50	33.19	21.19	35.11	23.11	12.00	2.09	1.00	4.69	5200	5.36
3/4×18	.75	.94	4.18	1.50	45.19	27.19	47.11	29.11	18.00	2.09	1.00	4.69	5200	7.00
7/8×12	.88	1.13	4.85	1.75	34.34	22.34	36.57	24.57	12.00	2.38	1.25	5.10	7200	8.00
7/8×18	.88	1.13	4.85	1.75	46.34	28.34	48.57	30.57	18.00	2.38	1.25	5.10	7200	9.75
1×6	1.00	1.19	5.53	2.06	24.34	18.34	26.89	20.89	6.00	3.00	1.44	6.36	10000	8.92
1×12	1.00	1.19	5.53	2.06	36.34	24.34	38.89	26.89	12.00	3.00	1.44	6.36	10000	11.20
1×18	1.00	1.19	5.53	2.06	48.34	30.34	50.89	32.89	18.00	3.00	1.44	6.36	10000	13.30
1×24	1.00	1.19	5.53	2.06	60.34	36.34	62.89	38.89	24.00	3.00	1.44	6.36	10000	17.00
1-1/4×12	1.25	1.75	7.21	2.81	38.82	26.82	42.05	30.05	12.00	3.56	1.81	7.72	15200	20.00
1-1/4×18	1.25	1.75	7.21	2.81	50.82	32.82	54.05	36.05	18.00	3.56	1.81	7.72	15200	24.18
1-1/4×24	1.25	1.75	7.21	2.81	62.82	38.82	66.05	42.05	24.00	3.56	1.81	7.72	15200	28.50
1-1/2×12	1.50	2.06	7.88	2.81	40.50	28.50	44.25	32.25	12.00	4.06	2.12	8.62	21400	28.99
1-1/2×18	1.50	2.06	7.88	2.81	52.50	34.50	56.25	38.25	18.00	4.06	2.12	8.62	21400	35.00
1-1/2×24	1.50	2.06	7.88	2.81	64.50	40.50	68.25	44.25	24.00	4.06	2.12	8.62	21400	39.18
1-3/4×18	1.75	2.38	9.40	3.38	55.38	37.38	59.78	41.78	18.00	4.62	2.38	10.00	28000	53.75
1-3/4×24	1.75	2.38	9.40	3.38	67.38	43.38	71.78	47.78	24.00	4.62	2.38	10.00	28000	60.68
2×24	2.00	2.50	11.86	3.69	72.62	48.62	77.95	53.95	24.00	5.75	2.69	13.09	37000	89.00
2-1/2×24	2.50	2.88	13.56	4.44	75.80	51.80	82.40	58.40	24.00	6.50	3.12	13.78	60000	150.00
2-3/4×24	2.75	3.50	15.22	4.19	77.88	53.88	85.50	61.50	24.00	7.00	3.25	15.22	75000	183.00

203

美式花篮螺丝圈圈型

US Type Turnbuckle Eye And Eye
US-Typ Spannschloss Öse-Gabel

AISI304/AISI316

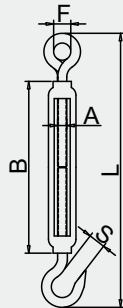


Size	A	J	K	M	N	BB	R	S	X	WLL	WT
inch	inch	inch	inch	inch	inch	inch	inch	inch	inch	lbs	lbs
1/4×4	.25	11.35	7.35	12.07	8.07	4.00	.78	.34	1.75	500	.32
5/16×4-1/2	.31	13.71	8.71	14.01	9.51	4.50	.94	.44	2.09	800	.47
3/8×6	.38	16.81	10.81	17.77	11.77	6.00	1.12	.53	2.52	1200	.76
1/2×6	.50	18.29	12.29	19.48	13.48	6.00	1.44	.72	3.23	2200	1.53
1/2×9	.50	24.29	15.29	25.48	16.48	9.00	1.44	.72	3.23	2200	1.71
1/2×12	.50	30.29	18.29	31.48	19.48	12.00	1.44	.72	3.23	2200	2.06
5/8×6	.63	19.74	13.74	21.28	15.28	6.00	1.75	.88	3.90	3500	2.35
5/8×9	.63	25.74	16.74	27.28	18.28	9.00	1.75	.88	3.90	3500	3.06
5/8×12	.63	31.74	19.74	33.28	21.28	12.00	1.75	.88	3.90	3500	3.78
3/4×6	.75	21.19	15.19	13.11	17.11	6.00	2.09	1.00	4.69	5200	4.00
3/4×9	.75	27.19	18.19	29.11	20.11	9.00	2.09	1.00	4.69	5200	4.75
3/4×12	.75	33.19	21.19	35.11	23.11	12.00	2.09	1.00	4.69	5200	5.36
3/4×18	.75	45.19	27.19	47.11	29.11	18.00	2.09	1.00	4.69	5200	7.00
7/8×12	.88	34.34	22.34	36.57	24.57	12.00	2.38	1.25	5.10	7200	8.00
7/8×18	.88	46.34	28.34	48.57	30.57	18.00	2.38	1.25	5.10	7200	9.75
1×6	1.00	24.34	18.34	26.89	20.89	6.00	3.00	1.44	6.36	10000	8.92
1×12	1.00	36.34	24.34	38.89	26.89	12.00	3.00	1.44	6.36	10000	11.20
1×18	1.00	48.34	30.34	50.89	32.89	18.00	3.00	1.44	6.36	10000	13.30
1×24	1.00	60.34	36.34	62.89	38.89	24.00	3.00	1.44	6.36	10000	17.00
1-1/4×12	1.25	38.82	26.82	42.05	30.05	12.00	3.56	1.81	7.72	15200	20.00
1-1/4×18	1.25	50.82	32.82	54.05	36.05	18.00	3.56	1.81	7.72	15200	24.18
1-1/4×24	1.25	62.82	38.82	66.05	42.05	24.00	3.56	1.81	7.72	15200	28.50
1-1/2×12	1.50	40.50	28.50	44.25	32.25	12.00	4.06	2.12	8.62	21400	28.99
1-1/2×18	1.50	52.50	34.50	56.25	38.25	18.00	4.06	2.12	8.62	21400	35.00
1-1/2×24	1.50	64.50	40.50	68.25	44.25	24.00	4.06	2.12	8.62	21400	39.18
1-3/4×18	1.75	55.38	37.38	59.78	41.78	18.00	4.62	2.38	10.00	28000	53.75
1-3/4×24	1.75	67.38	43.38	71.78	47.78	24.00	4.62	2.38	10.00	28000	60.68
2×24	2.00	72.62	48.62	77.95	53.95	24.00	5.75	2.69	13.09	37000	89.00
2-1/2×24	2.50	75.80	51.80	82.40	58.40	24.00	6.50	3.12	13.78	60000	150.00
2-3/4×24	2.75	77.88	53.88	85.50	61.50	24.00	7.00	3.25	15.22	75000	183.00

204

欧式花篮螺丝钩环型
Turnbuckle Eye And Hook
Spannschloss Öse-Haken

AISI304/AISI316

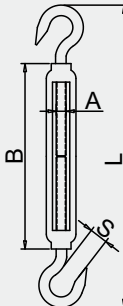


Size(A)	B	L	F	S	BL	WT
mm	mm	mm	mm	mm	kg	kg
M4	58	102	10	5	120	0.024
M5	72	122	11	7	200	0.041
M6	91	149	11	8	360	0.081
M8	121	195	15	9	800	0.148
M10	152	238	15	13	1200	0.278
M12	201	308	20	16	1500	0.506
M16	250	380	26	23	2400	1.120
M20	297	464	30	25	3200	2.004

205

欧式花篮螺丝双钩型
Turnbuckle Hook And Hook
Spannschloss Haken-Haken

AISI304/AISI316

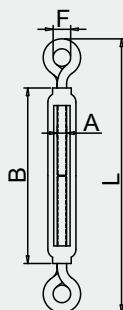


Size(A)	B	L	S	BL	WT
mm	mm	mm	mm	kg	kg
M4	58	102	5	120	0.024
M5	72	122	7	200	0.041
M6	91	149	8	360	0.081
M8	121	195	9	800	0.148
M10	152	238	13	1200	0.278
M12	201	308	16	1500	0.506
M16	250	380	23	2400	1.120
M20	297	464	25	3200	2.004

206

欧式花篮螺丝双环型
Turnbuckle Eye And Eye
Spannschloss Öse-Öse

AISI304/AISI316



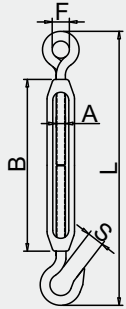
Size(A)	B	L	F	BL	WT
mm	mm	mm	mm	kg	kg
M4	58	102	10	480	0.024
M5	72	122	11	700	0.041
M6	91	149	11	1600	0.081
M8	121	195	15	2800	0.148
M10	152	238	15	4000	0.278
M12	201	308	20	5000	0.506
M16	250	380	26	6500	1.120
M20	297	464	30	9000	2.004

207

日式花篮螺丝钩环型

JIS Turnbuckle Eye And Hook
JIS Spannschloss Öse-Haken

AISI304/AISI316



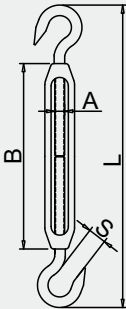
Size(A)	B	L	F	S	BL	WT
inch	mm	mm	mm	mm	kg	kg
W3/16	70	115	10	6	120	0.041
W1/4	90	145	10	9	360	0.095
W5/16	120	180	14	10	800	0.176
W3/8	150	230	15	13	1200	0.300
W1/2	200	290	19	17	1500	0.640

208

日式花篮螺丝双钩型

JIS Turnbuckle Hook And Hook
JIS Spannschloss Haken-Haken

AISI304/AISI316



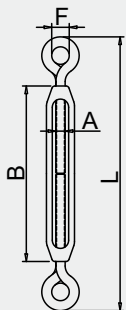
Size(A)	B	L	S	BL	WT
inch	mm	mm	mm	kg	kg
W3/16	70	115	6	120	0.041
W1/4	90	145	9	360	0.095
W5/16	120	180	10	800	0.176
W3/8	150	230	13	1200	0.300
W1/2	200	290	17	1500	0.640

209

日式花篮螺丝双环型

JIS Turnbuckle Eye And Eye
JIS Spannschloss Öse-Öse

AISI304/AISI316

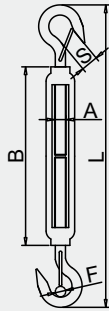


Size(A)	B	L	F	BL	WT
inch	mm	mm	mm	kg	kg
W3/16	70	115	10	500	0.041
W1/4	90	145	10	1600	0.095
W5/16	120	180	14	2800	0.176
W3/8	150	230	15	4000	0.300
W1/2	200	290	19	5000	0.640

210

带弹簧双钩型花篮螺丝
Turnbuckle With Stopper
Spannschloss mit Im Frühjahr

AISI304/AISI316

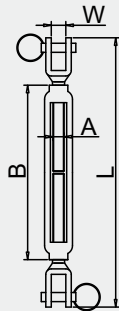


Size(A)	B	L	F	S	BL	WT
mm	mm	mm	mm	mm	kg	kg
M6	91	160	5	8	360	0.081
M8	121	200	5	10	800	0.150
M10	152	250	8	13	1200	0.280
M12	201	330	12	16	1500	0.510

211

双叉型开体花篮螺丝
Turnbuckle Fork And Fork
Wantenspanner Gabel-Gabel

AISI304/AISI316

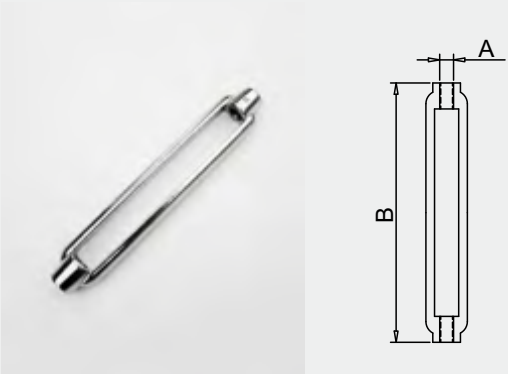


Size(A)	B	L	W	BL	WT
mm	mm	mm	mm	kg	kg
M5	72	120	9	700	0.060
M6	91	140	9	700	0.100
M8	121	180	10	1800	0.130
M10	152	215	10	2000	0.260
M12	201	280	11	3400	0.450
M16	250	350	14	6000	1.030
M20	297	430	23	8000	1.900



212 花篮体
Turnbuckle Sleeve
Spannschlossmutter ähnlich

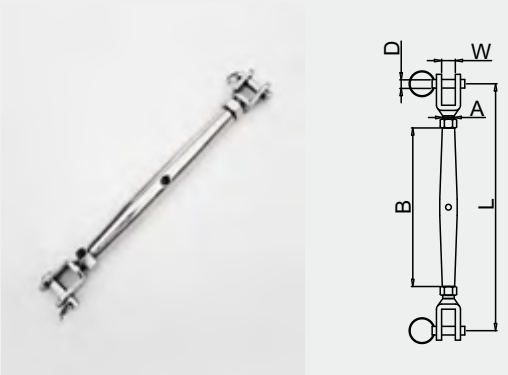
AISI304/AISI316



Size(A)	B	BL	WT
mm	mm	kg	kg
M4	58	120	0.014
M5	72	200	0.021
M6	91	360	0.046
M8	121	800	0.065
M10	152	1200	0.122
M12	201	1500	0.218
M16	250	2400	0.441
M20	297	3200	0.795

213 封闭花篮螺丝双叉型
Turnbuckle With Two Forks
Wantenspanner Gabel-Gabel

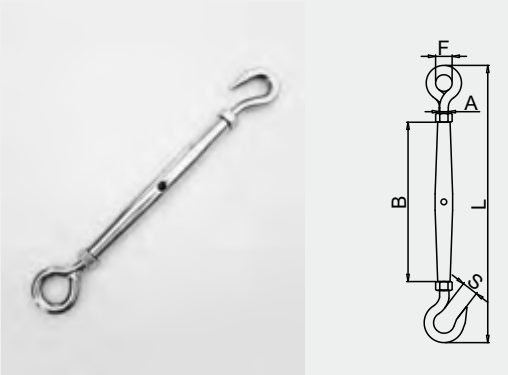
AISI304/AISI316



Size(A)	W	B	ΦD	L	BL	WT
mm	mm	mm	mm	mm	kg	kg
M5	9	80	5	122-180	800	0.048
M6	9	90	5	137-210	800	0.084
M8	10	110	6	155-250	1800	0.122
M10	11	120	8	178-275	2000	0.206
M12	11	150	10	225-340	3400	0.305
M16	15	190	14	280-450	6400	0.844
M20	24	220	15	350-525	8000	1.480

214 封闭花篮螺丝钩环型
Turnbuckle Eye And Hook
Spannschloss Öse-Haken

AISI304/AISI316

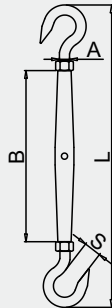


Size(A)	B	L	F	S	BL
mm	mm	mm	mm	mm	kg
M5	80	140	11	7	200
M6	90	160	11	8	360
M8	110	198	15	9	800
M10	120	226	15	13	1200
M12	150	278	20	16	1500
M16	190	346	26	23	2400
M20	220	420	30	25	3200

215

封闭花篮螺丝双钩型
Turnbuckle Hook And Hook
Spannschloss Haken-Haken

AISI304/AISI316

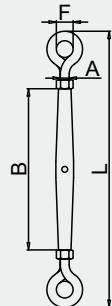


Size(A)	B	L	S	BL
mm	mm	mm	mm	kg
M5	80	140	7	200
M6	90	160	8	360
M8	110	198	9	800
M10	120	226	13	1200
M12	150	278	16	1500
M16	190	346	23	2400
M20	220	420	25	3200

216

封闭花篮螺丝双环型
Turnbuckle Eye And Eye
Spannschloss Öse-Öse

AISI304/AISI316

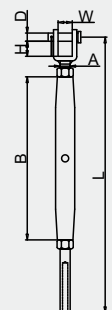


Size(A)	B	L	F	BL
mm	mm	mm	mm	kg
M5	80	140	11	700
M6	90	160	11	1600
M8	110	198	15	2800
M10	120	226	15	4000
M12	150	278	20	5000
M16	190	346	26	6500
M20	220	420	30	9000

217

封闭花篮接线器
Turnbuckle with fork and terminal
Wantenspanner Gabel-Terminal

AISI304/AISI316



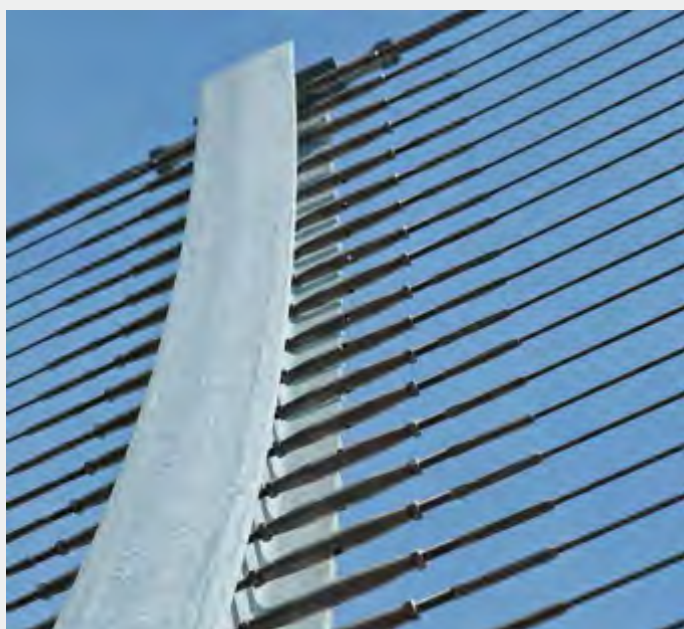
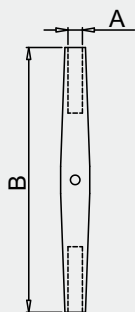
RopeΦ	A	B	D	W	H	L
mm	mm	mm	mm	mm	mm	mm
3	M6	90	5	9	9	170
4	M8	110	6	10	10	200
5	M10	120	8	11	10	230
6	M12	150	10	11	14	280
8	M16	190	12	15	18	340
10	M20	220	15	24	30	420

AISI304/AISI316

218

封闭花篮管
Turnbuckle Sleeve
Spannschlossmutter ähnlich

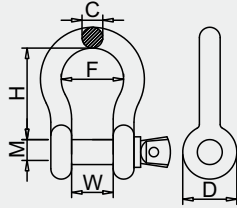
Size(A)	B	WT
mm	mm	kg
M5	80	0.011
M6	90	0.033
M8	110	0.046
M10	120	0.061
M12	150	0.087
M16	190	0.270
M20	220	0.396



301

美式弓型卸扣
US Type Bow Shackle
US-Typ Schäkel, Geschweift

AISI304/AISI316

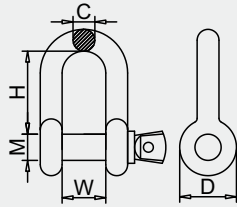


Size(M)	C	W	H	F	D	WLL	WT
inch	inch	inch	inch	inch	inch	tons	lbs
3/16	.19	.38	.88	.60	.56	1/3	.05
1/4	.25	.47	1.13	.78	.61	1/2	.12
5/16	.31	.53	1.22	.84	.75	3/4	.19
3/8	.38	.66	1.44	1.03	.91	1	.31
7/16	.44	.75	1.69	1.16	1.06	1-1/2	.38
1/2	.50	.81	1.88	1.31	1.19	2	.63
5/8	.69	1.06	2.38	1.69	1.50	3-1/4	1.38
3/4	.81	1.25	2.81	2.00	1.81	4-3/4	2.25
7/8	.97	1.44	3.30	2.28	2.09	6-1/2	3.38
1	1.06	1.69	3.75	2.69	2.38	8-1/2	5.32
1-1/8	1.25	1.81	4.25	2.91	2.69	9-1/2	6.81
1-1/4	1.38	2.03	4.69	3.25	3.00	12	9.50
1-3/8	1.50	2.25	5.25	3.63	3.31	13-1/2	13.25
1-1/2	1.62	2.38	5.75	3.88	3.63	17	17.20
1-3/4	2.25	2.88	7.00	5.00	4.19	25	30.38
2	2.40	3.25	7.75	5.75	4.81	35	45.00
2-1/2	3.13	4.13	10.50	7.25	5.69	55	85.75

302

美式D型卸扣
US Type Dee Shackle
US-Typ Schäkel

AISI304/AISI316

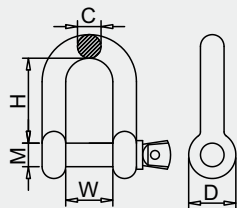


Size(M)	C	W	H	D	WLL	WT
inch	inch	inch	inch	inch	tons	lbs
3/16	.19	.38	.75	.56	1/3	.05
1/4	.25	.47	.88	.61	1/2	.11
5/16	.31	.53	1.03	.75	3/4	.17
3/8	.38	.66	1.25	.91	1	.24
7/16	.44	.75	1.44	1.06	1-1/2	.40
1/2	.50	.81	1.63	1.19	2	.59
5/8	.62	1.06	2.00	1.50	3-1/4	1.21
3/4	.81	1.25	2.38	1.81	4-3/4	2.25
7/8	.97	1.44	2.81	2.09	6-1/2	3.16
1	1.00	1.69	3.19	2.38	8-1/2	4.75
1-1/8	1.25	1.81	3.58	2.69	9-1/2	6.75
1-1/4	1.38	2.03	3.94	3.00	12	9.06
1-3/8	1.50	2.25	4.38	3.31	13-1/2	11.63
1-1/2	1.62	2.38	4.81	3.63	17	15.95
1-3/4	2.12	2.88	5.75	4.19	25	26.75
2	2.00	3.25	6.75	4.81	35	42.31
2-1/2	2.62	4.13	8.00	5.69	55	71.75

303

D型卸扣
Dee Shackle
Schäkel

AISI304/AISI316



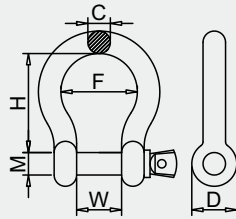
Size(M)	C	H	W	D	BL	WT
mm	mm	mm	mm	mm	kg	kg
M4	4	15	8	8	500	0.008
M5	5	16	10	10	800	0.014
M6	6	21	12	12	1100	0.025
M8	8	28	16	16	2000	0.057
M10	10	33	20	20	3200	0.109
M12	12	41	24	24	4400	0.181
M14	13.5	50	28	28	5600	0.296
M16	16	58	32	32	8000	0.439
M20	19	61	37	40	10000	0.728
M22	21	77	44	44	15000	1.181
M25	24	87	51	50	20000	1.741
M28	28	100	59	56	25000	2.408
M30	30	102	62	60	28000	3.131
M32	31	114	64	64	32000	3.630

304

弓型卸扣

Bow Shackle
Schäkel, Geschweift

AISI304/AISI316



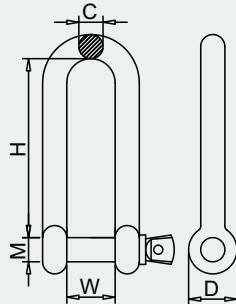
Size(M)	C	H	W	F	D	BL	WT
mm	mm	mm	mm	mm	mm	kg	kg
M4	4	16	8	12	8	500	0.010
M5	5	20	10	15	10	800	0.020
M6	6	24	12	18	12	1100	0.030
M8	8	32	16	24	16	2000	0.080
M10	10	40	20	30	20	3200	0.130
M12	12	48	24	36	24	4400	0.224
M14	14	56	28	42	28	5600	0.346
M16	16	64	32	48	32	8000	0.370
M20	20	80	40	60	40	10000	0.980
M22	22	88	44	66	44	15000	1.350
M25	25	100	51	75	50	20000	2.200

305

长D型卸扣

Long Dee Shackle
Schäkel, Lange Form

AISI304/AISI316



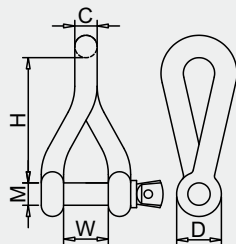
Size(M)	C	H	W	D	BL	WT
mm	mm	mm	mm	mm	kg	kg
M4	4	30	8	8	500	0.010
M5	5	37	10	10	800	0.018
M6	6	45	12	12	1100	0.025
M8	8	60	16	16	2000	0.095
M10	10	75	20	20	3200	0.180
M12	12	90	24	24	4400	0.270
M14	14	105	28	28	5600	0.380
M16	16	120	32	32	8000	0.640

306

扭体卸扣

Twisted Shackle
Schäkel, Gedrehte Form

AISI304/AISI316



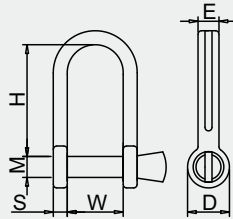
Size(M)	C	H	W	D	BL	WT
mm	mm	mm	mm	mm	kg	kg
M4	4	23	8	8	500	0.010
M5	5	28	10	10	800	0.020
M6	6	33	12	12	1100	0.030
M8	8	44	16	16	2000	0.070
M10	10	55	20	20	3200	0.130
M12	12	66	24	24	4400	0.230

307

板式D型卸扣
Flat Dee Shackle
Flachschäkel

AISI304/AISI316

Size(M)	S	H	W	E	D
mm	mm	mm	mm	mm	mm
M4	1.5	17	10	6	9
M5	2	20	12	7	11
M6	3	24	15	8	12
M8	4	44	21	10	18

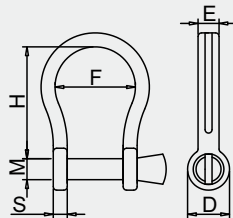


308

板式弓型卸扣
Flat Bow Shackle
Flachschäkel, Geschweift

AISI304/AISI316

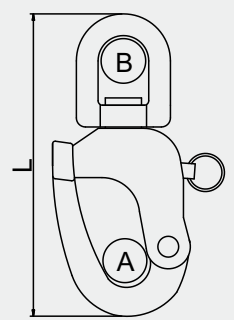
Size(M)	S	H	E	F	D
mm	mm	mm	mm	mm	mm
M4	1.5	15	5	9	8
M5	2	17	7	11	10
M6	3	23	8	16	12
M8	4	31	8	23	16
M10	5	40	11	25	20
M12	6	50	14	28	24



309

旋转环式弹簧卸扣
Swivel Snap Shackle With Eye
Schnappschäkel mit Wirbelauge

AISI304/AISI316

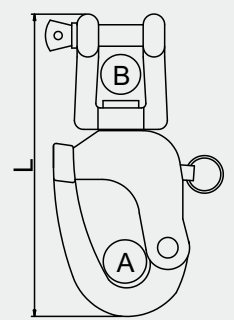


Size(L)	A	B	WLL
mm	mm	mm	kg
70	12	12	275
87	16	16	500
128	22	22	875

310

旋转叉式弹簧卸扣
Swivel Snap Shackle With Jaw
Schnappschäkel mit Wirbelgabel

AISI304/AISI316

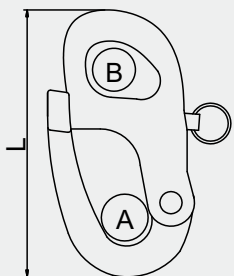


Size(L)	A	B	WLL
mm	mm	mm	kg
70	12	12	275
87	16	16	500
128	22	22	875

311

固定式弹簧卸扣
Snap Shackle With Fixed Eye
Schnappschäkel

AISI304/AISI316



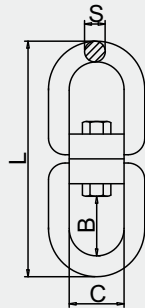
Size(L)	A	B	WLL
mm	mm	mm	kg
52	12	9	275
66	16	12	500
96	22	16	875

312

圈圈型旋转环

Swivel Eye And Eye
Wirbel, Auge-Auge

AISI304/AISI316



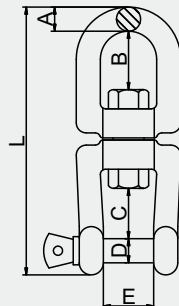
Size(Φ S)	B	C	L	BL	WT
mm	mm	mm	mm	kg	kg
5	13	13.5	60	650	0.033
6	15	15.5	65	1200	0.049
8	21	20	90	1900	0.122
10	26	24	115	3500	0.258
12	33	31	150	5000	0.485
16	43	39	188	8500	1.100
20	46	41	228	10000	2.300
22	52	47	254	11500	3.200
25	65	62	295	13000	4.900
28	76	70	340	16000	6.700
32	87	80	389	21000	9.800

313

圈叉型旋转环

Swivel Eye And Jaw
Wirbel, Auge-Gabel

AISI304/AISI316



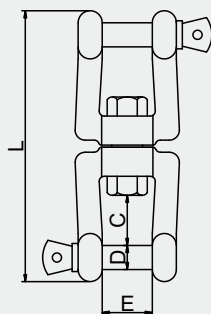
Size(Φ A)	B	C	D	E	L	BL	WT
mm	mm	mm	mm	mm	mm	kg	kg
6	15	11	6	12	66	1200	0.060
8	21	16	8	16	94	1900	0.150
10	26	22	10	20	118	3500	0.290
13	33	28	13	26	152	5000	0.600
16	45	37	16	32	188	8500	1.060
19	50	45	19	38	229	10000	1.880

314

叉叉型旋转环

Swivel Jaw And Jaw
Wirbel, Gabel-Gabel

AISI304/AISI316

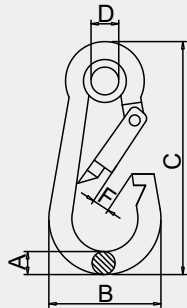


Size(Φ A)	C	D	E	L	BL	WT
mm	mm	mm	mm	mm	kg	kg
6	11	6	12	66	1200	0.066
8	16	8	16	94	1900	0.170
10	22	10	20	118	3500	0.330
13	28	13	26	152	5000	0.670
16	37	16	32	188	8500	1.150
19	45	19	38	229	10000	2.080

401

带圈弹簧钩DIN5299A
Snap Hook With Eyelet
Karabinerhaken mit Kausche

AISI304/AISI316

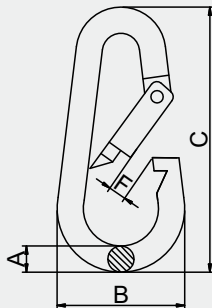


Size(Φ A)	B	C	D	F	BL	WT
mm	mm	mm	mm	mm	kg	kg
4	20	40	5	7	200	0.008
5	25	50	5	7	240	0.016
6	30	60	5	8	240	0.030
7	35	70	7	8	360	0.043
8	40	80	10	9	450	0.063
9	45	90	10	10	500	0.090
10	50	100	13	11	650	0.121
11	57	120	13	16	850	0.185
12	67	140	15	19	1000	0.260
13	74	160	17	25	1100	0.350
14	86	180	17	35	1200	0.470

402

梨形弹簧钩DIN5299B
Pear Shaped Snap Hook
Karabinerhaken DIN5299B

AISI304/AISI316

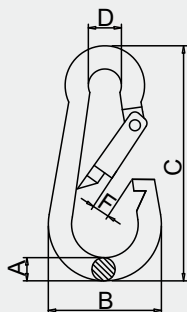


Size(Φ A)	B	C	F	BL	WT
mm	mm	mm	mm	kg	kg
5	25	50	7	240	0.017
6	30	60	8	240	0.025
7	35	70	8	360	0.044
8	40	80	9	450	0.066
9	45	90	10	500	0.093
10	50	100	11	650	0.130
11	57	120	16	850	0.185
12	67	140	19	1000	0.250

403

弹簧钩DIN5299C
Snap Hook DIN5299C
Karabinerhaken

AISI304/AISI316



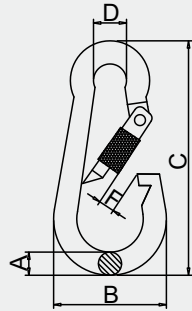
Size(Φ A)	B	C	D	F	BL	WT
mm	mm	mm	mm	mm	kg	kg
4	20	40	7	7	200	0.008
5	25	50	8	7	240	0.016
6	30	60	9	8	240	0.030
7	35	70	10	8	360	0.043
8	40	80	12	9	450	0.063
9	45	90	12	10	500	0.090
10	50	100	15	11	650	0.121
11	57	120	18	16	850	0.185
12	67	140	20	19	1000	0.260
13	74	160	22	25	1100	0.350
14	86	180	22	35	1200	0.470

404

带螺母弹簧钩DIN5299D

Snap Hook With Nut
Karabinerhaken mit Mutter

AISI304/AISI316



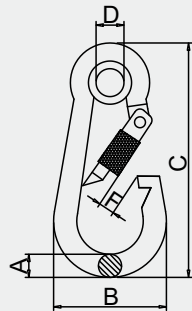
Size(Φ A)	B	C	D	F	BL	WT
mm	mm	mm	mm	mm	kg	kg
4	20	40	7	7	200	0.008
5	25	50	8	7	240	0.016
6	30	60	9	8	240	0.030
7	35	70	10	8	360	0.043
8	40	80	12	9	450	0.063
9	45	90	12	10	500	0.090
10	50	100	15	11	650	0.121
11	57	120	18	16	850	0.185
12	67	140	20	19	1000	0.260
13	74	160	22	25	1100	0.350
14	86	180	22	35	1200	0.470

405

带圈带螺母弹簧钩

Snap Hook With Eyelet And Nut
Karabinerhaken mit mutter und Kausche

AISI304/AISI316



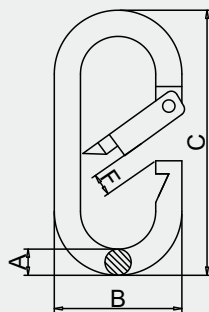
Size(Φ A)	B	C	D	F	BL	WT
mm	mm	mm	mm	mm	kg	kg
4	20	40	5	7	200	0.008
5	25	50	5	7	240	0.016
6	30	60	5	8	240	0.030
7	35	70	7	8	360	0.043
8	40	80	10	9	450	0.063
9	45	90	10	10	500	0.090
10	50	100	13	11	650	0.121
11	57	120	13	16	850	0.185
12	67	140	15	19	1000	0.260
13	74	160	17	25	1100	0.350
14	86	180	17	35	1200	0.470

406

跑道型弹簧钩

Straight Snap Hook
Oval Karabinerhaken

AISI304/AISI316

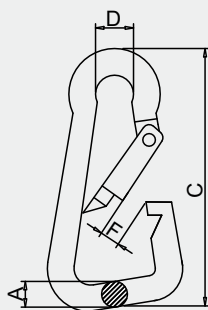


Size(Φ A)	B	C	F	BL	WT
mm	mm	mm	mm	kg	kg
5	25	50	9	240	0.017
6	30	60	11	240	0.025
8	40	80	13	450	0.057
10	50	100	16	650	0.135
11	58	120	21	850	0.185

407

斜三角型弹簧钩
Oblique Angle Snap Hook
Karabinerhaken, Asymmetrisch

AISI304/AISI316

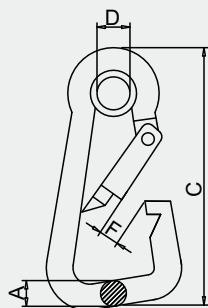


Size(ΦA)	C	D	F	BL	WT
mm	mm	mm	mm	kg	kg
5	50	8	9	240	0.015
6	60	9	10	240	0.028
8	80	12	13	450	0.060
10	100	15	18	650	0.130
11	120	15	24	850	0.190

408

斜三角型带环弹簧钩
Angle Snap Hook With Eyelet
Karabinerhaken mit Kausche

AISI304/AISI316

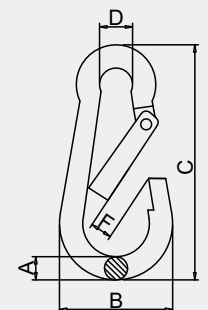


Size(ΦA)	C	D	F	BL	WT
mm	mm	mm	mm	kg	kg
5	50	5	9	240	0.018
6	60	5	10	240	0.030
8	80	10	13	450	0.070
10	100	13	18	650	0.140
11	120	13	24	850	0.200

409

长开口弹簧钩
Snap Hook With Wide Opening
Karabinerhaken

AISI304/AISI316

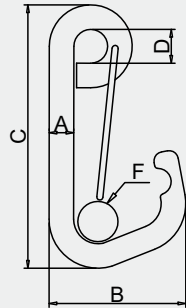


Size(ΦA)	B	C	D	F	BL	WT
mm	mm	mm	mm	mm	kg	kg
5	25	50	8	7	240	0.016
6	30	60	9	8	240	0.030
7	35	70	10	8	360	0.043
8	40	80	12	9	450	0.063
9	45	90	12	10	500	0.090
10	50	100	15	11	650	0.121
11	57	120	18	16	850	0.185
12	67	140	20	19	1000	0.260

410

平头简易弹簧钩
Delta Simple Snap Hook
Karabinerhaken

AISI304/AISI316

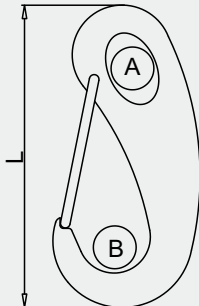


Size(Φ A)	B	C	D	F	BL	WT
mm	mm	mm	mm	mm	kg	kg
5	28	50	-	10	-	-
6	35	60	9	12	240	0.030
8	46	80	11	17	450	0.070
10	58	100	15	23	650	0.135
12	70	120	18	28	1000	0.232
14	84	140	-	32	1200	-

411

蛋型弹簧钩
Egg Shaped Snap Hook
Schnapphaken

AISI304/AISI316

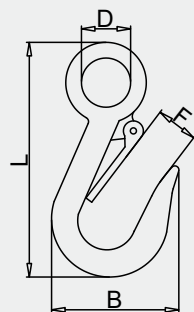


Size(L)	A	B	BL	WT
mm	mm	mm	kg	kg
50	7	11	220	0.022
70	10	12	400	0.050
100	15	19	800	0.145

412

眼型货钩
Eye Hook
Trailerhaken

AISI304/AISI316

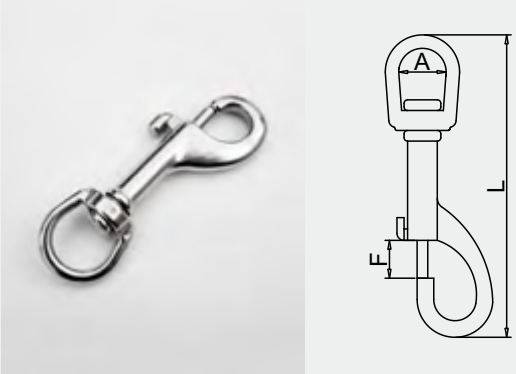


Size(D)	B	L	F	BL	WT
mm	mm	mm	mm	kg	kg
19	47	100	15	750	0.115
28	53	120	18	1000	0.170

413 单头钩
Single Hook
Wirbelkarabiner

AISI304/AISI316

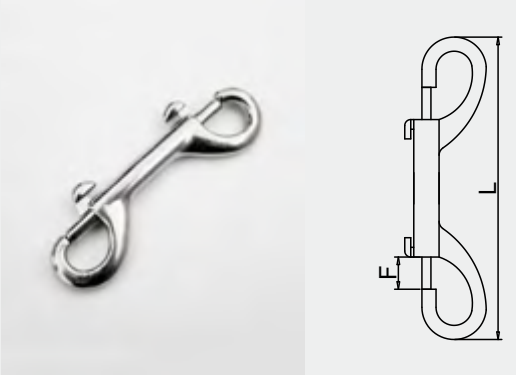
Size(L)	A	F
mm	mm	mm
53	10	7
67	12	7
76	12	8
82	16	10
91	19	10
94	25	10
107	28	12
113	32	12



414 双头钩
Double Hook
Doppelkarabiner

AISI304/AISI316

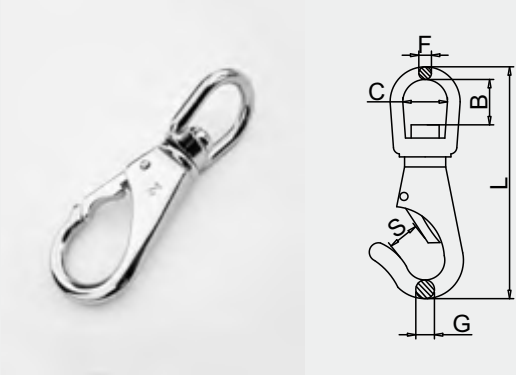
Size(L)	F
mm	mm
65	7
76	8
90	9
100	9
118	12



415 万向钩
Swivel Snap Hook
Augwirbelhaken

AISI304/AISI316

Size(ΦF)	L	C	B	ΦG	S	BL	WT
mm	mm	mm	mm	mm	mm	kg	kg
4(#0)	68	14	14	5	8	160	0.030
5(#1)	85	20	20	6	11	200	0.056
6(#2)	100	22	20	8	12	300	0.084
7(#3)	118	21	20	8	16	450	0.133

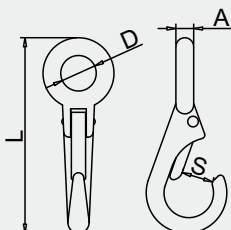


416

定向钩
Rigid Snap Hook
Starre Karabinerhaken

AISI304/AISI316

Size(A)	D	L	S	BL	WT
mm	mm	mm	mm	kg	kg
4	10	56	7	160	0.023
5	16	72	11	200	0.035
6	18	80	13	300	0.058
7	19	97	16	450	0.101

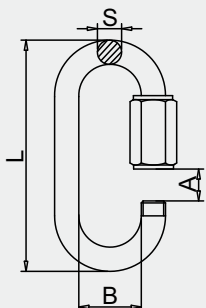


417

快速连接环
Quick Link
Schnellverschluss

AISI304/AISI316

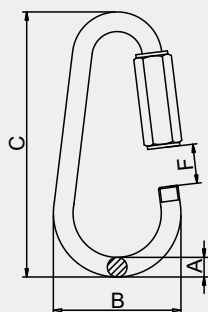
Size(Φ S)	A	B	L	BL	WT
mm	mm	mm	mm	kg	kg
3.5	4.5	10	36.5	190	0.010
4	5.5	11	42	560	0.012
5	6.5	13	50	730	0.021
6	7.5	15	60	1000	0.037
7	8.5	16	65	1360	0.060
8	10.5	18	75	1750	0.080
9	11.5	17	82	2300	0.110
10	12.5	21	91	2600	0.140
12	14.5	24	107	2800	0.230
14	17	26	125	3200	0.370



418

梨形快速接环
Pear Shaped Quick Link
Birnenförmig Schraubverbinder

AISI304/AISI316

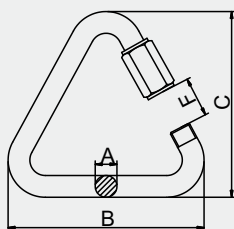


Size(Φ A)	B	C	F
mm	mm	mm	mm
3.5	27	52	9
4	32	60	11
5	37	70	12
6	43	81	14
8	51	100	17
9	57	108	19
10	63	117	20
12	76	141	23

419

三角形快速接环
Delta Shaped Quick Link
Delta-Schraubverbinder

AISI304/AISI316

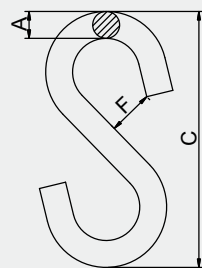


Size(Φ A)	B	C	F
mm	mm	mm	mm
3.5	31	37	5
5	40	47	6
6	47	56	7
8	56	73	10
10	66	87	12
12	75	104	15
14	86	122	19

420

S钩
S Hook
S Haken

AISI304/AISI316



Size(Φ A)	C	F
mm	mm	mm
3	25	3
4	35	4
5	45	6
6	55	7
7	65	8
8	75	10
10	105	11
12	120	13

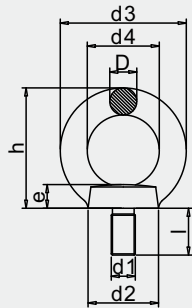


501

吊环螺丝DIN580

Lifting Eye Bolt
Ringschraube

AISI304/AISI316



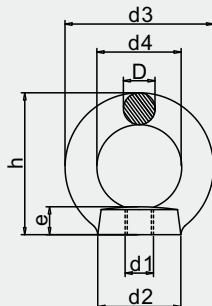
d1	d2	d3	d4	h	e	l	ΦD	BL	WT
mm	mm	mm	mm	mm	mm	mm	mm	kg	kg
M6	16	28	17	30	8	12	6	1300	0.024
M8	20	35	20	35	8	12	7.5	2400	0.043
M10	25	45	25	44	10	16	10	4000	0.093
M12	29	53	30	52	11	20	12	5400	0.155
M14	29	53	30	52	11	20	12	-	0.158
M16	34	61	35	60	13	25	14	9000	0.260
M18	37	67	37	66	17	34	15	-	0.371
M20	40	72	40	71	16	30	16	13000	0.417
M24	47	87	48	87	19	40	20	18000	0.733
M30	54	104	54	105	30	45	24	26000	1.400
M36	75	126	70	126	30	54	28	-	2.600

502

吊环螺母DIN582

Lifting Eye Nut
Ringmutter

AISI304/AISI316



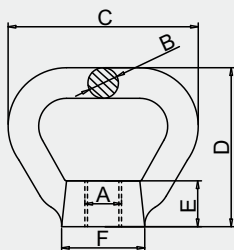
d1	d2	d3	d4	h	e	ΦD	BL	WT
mm	mm	mm	mm	mm	mm	mm	kg	kg
M6	17	28	16	30	8	6	1300	0.023
M8	20	35	20	35	8	8	2400	0.043
M10	25	45	25	44	10	10	4000	0.080
M12	29	53	30	52	12	12	5400	0.136
M14	30	53	30	52	11	12	-	0.126
M16	35	63	35	62	16	14	9000	0.234
M18	37	67	37	66	17	15	-	0.282
M20	40	71	40	70	18	16	13000	0.340
M24	47	87	48	87	18	20	18000	0.558
M30	55	104	54	104	30	25	26000	1.053
M36	75	126	70	126	30	28	-	2.080

503

环形螺母GB63

Bow Nut
Korbmutter

AISI304/AISI316

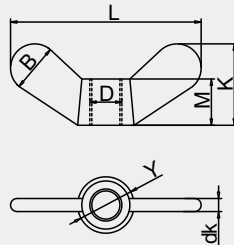


Size(A)	ΦB	C	D	E	ΦF	WT
mm	mm	mm	mm	mm	mm	kg
M10	8	60	47	12	20	0.065
M12	10	65	52	15	23	0.110
M14	10	66	52	15	23	0.120
M16	12	75	60	18	29	0.188
M18	12	75	60	18	29	0.198
M20	13	85	71	22	35	0.280
M24	14	97	83	26	45	0.430
M30	16	110	120	35	59	0.830

504

蝶形螺母
Wing Nut
Flügelmutter

AISI304/AISI316

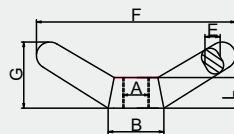


Size(D)	K	L	dk	M	B	ΦY	WT
mm	mm	mm	mm	mm	mm	mm	kg
M4	11	24	2	6	7	8	0.003
M5	15	28	3	7	8	10	0.006
M6	16	32	3.5	9	10	12	0.011
M8	18	40	4	12	11	14	0.018
M10	22	48	4.5	15	13.5	17.5	0.030
M12	26	58	5	18	16.5	21	0.055
M16	35	72	6.5	23	23.5	28	0.115
M20	41	84	7	23	25.5	33	0.151

505

羊角螺母
Toggle Nut
Knebelmutter

AISI304/AISI316

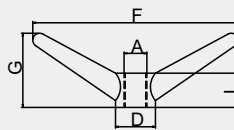


Size(A)	L	ΦB	E	F	G	WT
mm	mm	mm	mm	mm	mm	kg
M12	13	25	7	74	32	0.071
M16	19	31	8	90	43	0.142
M20	22	37	10	105	48	0.216
M24	27	50	16	160	75	0.641

506

欧式羊角螺母
European Toggle Nut
Europäisch Knebelmutter

AISI304/AISI316



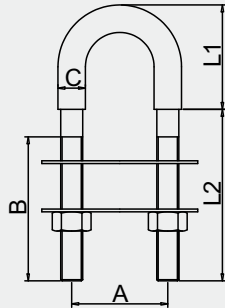
Size(A)	L	ΦD	F	G	WT
mm	mm	mm	mm	mm	kg
M12	20	25	115	38	0.120
M16	24	28	143	50	0.200
M20	30	35	180	63	0.390

507

U型螺栓带螺母垫片

U Bolt With Nuts And Plates
U-Bolzen mit Gegenplatten

AISI304/AISI316



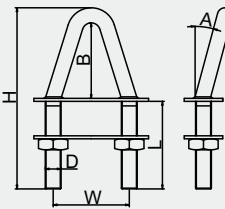
Size	A	B	ΦC	L1	L2	WT
mm	mm	mm	mm	mm	mm	kg
M4×62	30	30	6	25	37	0.030
M5×78	35	40	7	30	48	0.050
M6×90	35	45	8	35	55	0.070
M8×100	35	52	10	38	62	0.110
M8×120	45	62	10	47	73	0.140
M10×130	50	60	12	55	75	0.250
M12×150	60	65	14	65	85	0.400

508

A型螺栓带螺母垫片

A Bolt With Nuts And Plates
A-Bolzen mit Gegenplatten

AISI304/AISI316



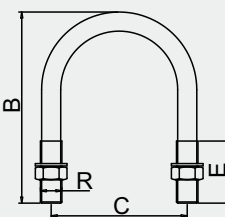
Size(D)	A	B	H	L	W	WT
mm	mm	mm	mm	mm	mm	kg
M8	0°	40	100	50	42	0.125
M8	8°	40	100	50	42	0.125
M8	18°	40	100	50	42	0.125
M10	0°	48	120	60	50	0.150
M10	8°	48	120	60	50	0.150
M10	18°	48	120	60	50	0.150

509

U型管夹

U Clamp
U-Bolzen

AISI304/AISI316

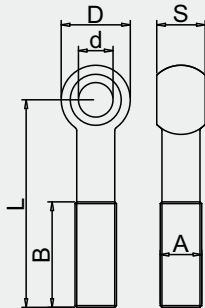


Size	TubeΦ	B	C	E	R	WT
inch	mm	mm	mm	mm	mm	kg
1/2	22	43	28	17	M6	0.023
3/4	28	50	34	19	M6	0.026
1	35	62	41	24	M6	0.031
1-1/4	43	71	49	24	M6	0.034
1-1/2	49	80	57	26	M8	0.072
2	62	91	70	26	M8	0.082
2-1/2	75	117	85	35	M10	0.161
3	90	130	100	35	M10	0.178
4	117	155	127	35	M10	0.210
5	144	186	154	40	M10	0.248
6	171	213	181	40	M10	0.282
8	222	264	232	40	M10	0.347

510

活结螺栓
Eye Bolt
Augenschrauben

AISI304/AISI316

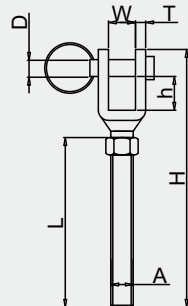


Size(A)	B	D	d	S	L
mm	mm	mm	mm	mm	mm
M4	14	8	3	5	20-35
M5	16	10	4	6	25-45
M6	18	12	5	8	30-50
M8	22	14	6	10	35-70
M10	26	18	8	12	40-110
M12	30	20	10	14	50-130
M16	38	28	12	18	60-160
M20	52	34	16	22	70-180
M24	60	42	20	26	90-260

511

叉型螺栓
Fork Bolt
Gabel mit Gewinde

AISI304/AISI316

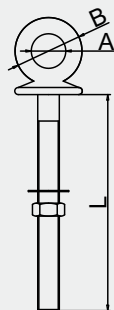


Size(A)	W	T	h	D	L	H	WT
mm	mm	mm	mm	mm	mm	mm	kg
M5	9	2.5	9	5	40	65	0.018
M6	9	2.5	9	5	45	70	0.025
M8	10	3	10	6	53	81	0.038
M10	11	4	10	8	60	92	0.072
M12	11	4	14	10	76	115	0.109
M16	15	6	18	12	100	150	0.287
M20	24	7	30	15	115	180	0.542

512

加长吊环螺丝
Long Eye Bolt
Augbolzen Lange Form

AISI304/AISI316

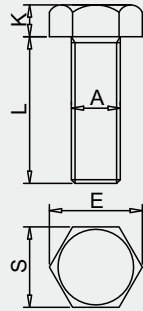


Size(ΦS)	A	B	L	WT
mm	mm	mm	mm	kg
M6×40	12	22	40	0.020
M6×60	12	22	60	0.030
M6×80	12	22	80	0.030
M8×60	14	27	60	0.050
M8×80	14	27	80	0.060
M8×100	14	27	100	0.060
M10×100	16	31	100	0.100
M12×120	18	36	120	0.160

513

外六角螺杆
Hexagon Head Bolt
Sechskantschrauben Gewinde

AISI304/AISI316

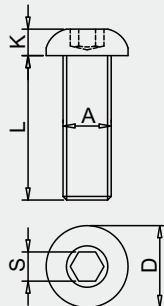


Size(A)	L	K	S	E
mm	mm	mm	mm	mm
M4	10-40	2.8	7	7.7
M5	10-50	3.5	8	8.8
M6	12-60	4	10	11
M8	16-80	5.3	13	14.4
M10	20-100	6.4	17	18.9
M12	25-120	7.5	19	21.1
M16	30-150	10	24	26.8
M20	40-150	12.5	30	33.6

514

盘头内六角螺栓
Button Head Bolt
Linsenkopfschrauben mit Innensechskant

AISI304/AISI316

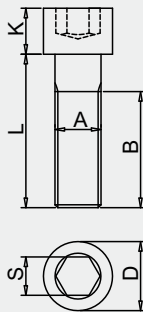


Size(A)	L	K	S	D
mm	mm	mm	mm	mm
M3	6-30	1.6	2	5.7
M4	8-40	2.2	2.5	7.6
M5	8-60	2.8	3	9.5
M6	8-60	3.3	4	10.5
M8	10-60	4.4	5	14
M10	15-60	5.5	6	17.5
M12	20-80	6.6	8	21

515

圆柱头内六角螺栓
Hexagon Socket Head Cap Bolt
Zylinderschrauben mit Innensechskant

AISI304/AISI316



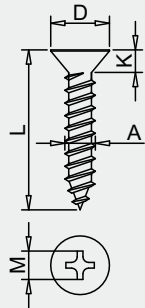
Size(A)	L	K	B	D	S
mm	mm	mm	mm	mm	mm
M3	6-30	3	18	5.5	2.5
M4	6-40	4	20	7	3
M5	8-50	5	22	8.5	4
M6	8-60	6	24	10	5
M8	12-100	8	28	13	6
M10	16-150	10	32	16	8
M12	20-150	12	36	18	10
M16	30-90	16	44	24	14
M20	50-120	20	52	30	17

516

十字沉头自攻螺丝

Cross Recess Countersunk Head Tapping Screw
Senkkopfschrauben mit Kreuzschlitz

AISI304/AISI316



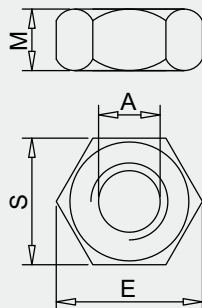
Size(A)	L	M	D	K
mm	mm	mm	mm	mm
ST2.2	6-25	2.4	4.3	1.3
ST2.9	6-30	3.2	5.5	1.7
ST3.5	6-70	4	7.5	2.1
ST4.2	10-80	5	8.1	2.5
ST4.8	10-120	6.5	9.5	3
ST5.5	12-120	8	10.8	3.4
ST6.3	12-100	10	12.4	3.8

517

六角螺母

Hexagon Nut
Sechskantmuttern

AISI304/AISI316



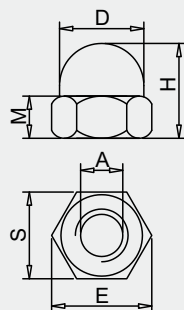
Size(A)	M	E	S
mm	mm	mm	mm
M3	2.4	6	5.5
M4	3.2	7.7	7
M5	4	8.8	8
M6	5	11	10
M8	6.5	14.4	13
M10	8	18.9	17
M12	10	21.1	19
M16	13	26.8	24
M20	16	33	30
M24	19	39.6	36
M30	24	50.9	46
M36	29	60.8	55

518

盖型螺母

Hexagon domed cap nut
Sechskant-Hutmuttern, hohe Form

AISI304/AISI316

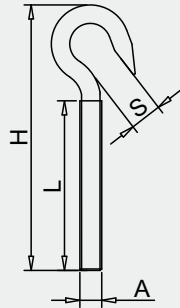


Size(A)	M	H	D	S	E
mm	mm	mm	mm	mm	mm
M3	2.4	7	5.5	5.5	6
M4	3.2	8	6.5	7	7.7
M5	4	10	7.5	8	8.8
M6	5	12	9.5	10	11
M8	6.5	15	12.5	13	14.4
M10	8	18	16	17	18.9
M12	10	22	18	19	21.1
M16	13	28	23	24	26.8

519

钩型螺栓
Hook Bolt
Haken mit Gewinde

AISI304/AISI316

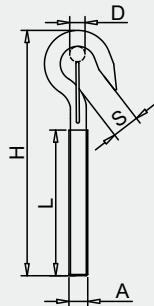


Size(A)	H	L	S	WT
mm/inch	mm	mm	mm	kg
M4	51	30	5	0.005
M5	60	36	7	0.010
M6	74	46	8	0.017
M8	98	61	9	0.039
M10	120	74	13	0.076
M12	154	100	16	0.138
M16	195	125	23	0.330
M20	220	135	25	0.579
W3/16	50	28	6	0.009
W1/4	75	45	9	0.018
W5/16	100	60	10	0.044
W3/8	120	75	13	0.076
W1/2	156	100	17	0.150

520

带弹簧钩型螺栓
Hook Bolt With Stopper
Haken mit Gewinde und Im Frühjahr

AISI304/AISI316

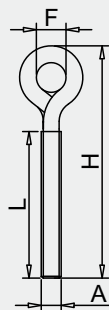


Size(A)	H	L	S	D
mm/inch	mm	mm	mm	mm
M6	79	44	8	5
M8	104	62	10	5
M10	126	77	13	8
M12	171	106	16	12
W1/4	79	44	8	5
W5/16	104	62	10	5
W3/8	126	77	13	8
W1/2	171	106	16	12

521

焊接眼型螺栓
Welded Eye Bolt
Öse mit Gewinde

AISI304/AISI316

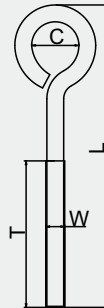


Size(A)	H	L	F	WT
mm/inch	mm	mm	mm	kg
M4	51	30	10	0.005
M5	62	36	11	0.010
M6	74	46	11	0.018
M8	98	61	15	0.044
M10	120	74	15	0.080
M12	155	100	20	0.150
M16	195	125	26	0.349
M20	225	135	30	0.630
W3/16	52	28	10	0.010
W1/4	74	45	10	0.020
W5/16	95	60	14	0.046
W3/8	122	75	15	0.076
W1/2	160	100	19	0.150

522

眼型螺栓
Eye Bolt
Ösenschraube

AISI304/AISI316

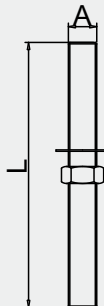


Size	W	L	T	C
inch	inch	inch	inch	inch
1/4×2	1/4	2	7/8	9/16
1/4×2-5/8	1/4	2-5/8	1-3/4	3/8
1/4×3	1/4	3	1-3/4	9/16
1/4×4	1/4	4	2-3/4	9/16
5/16×3-1/4	5/16	3-1/4	1-3/4	1/2
5/16×4	5/16	4	2-1/2	3/4
5/16×5	5/16	5	3	3/4
5/16×6	5/16	6	3	3/4
5/16×8	5/16	8	3	3/4
3/8×3-7/8	3/8	3-7/8	2-3/8	5/8
3/8×4	3/8	4	2	1
3/8×5	3/8	5	3	1
3/8×6	3/8	6	3	1
3/8×8	3/8	8	3-7/8	1
1/2×4	1/2	4	1-1/4	1-1/4
1/2×6	1/2	6	3	1-1/4
1/2×8	1/2	8	3-7/8	1-1/4

523

牙条带螺母垫片
Threaded Rod
Gewindestange

AISI304/AISI316

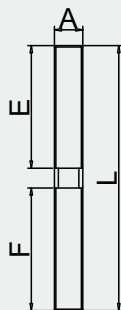


Size	A	L
mm	mm	mm
6M50	M6	50
6M75	M6	75
6M100	M6	100
6M125	M6	125
8M50	M8	50
8M75	M8	75
8M100	M8	100
8M125	M8	125
10M75	M10	75
10M100	M10	100
10M125	M10	125
10M150	M10	150
12M75	M12	75
12M100	M12	100
12M125	M12	125
12M150	M12	150

524

正反牙螺栓
Left And Right Threaded Rod
Gewinde, Rechts und Links

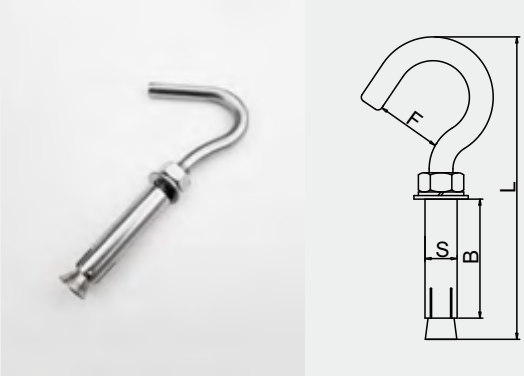
AISI304/AISI316



Size(A)	E	F	L
mm	mm	mm	mm
M5	30	30	65
M6	30	30	65
M8	30	30	65
M10	40	40	85
M12	50	50	105

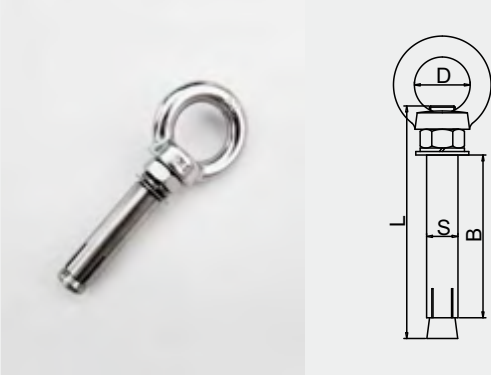
525 膨胀钩 Expansion Anchors With Hook AISI304/AISI316
Bolzenanker mit Haken

Size	B	S	L	F
mm	mm	mm	mm	mm
M6	39	9.6	88	20
M8	44	11.5	99	28
M10	46	13.5	105	30
M12	60	17.8	135	50



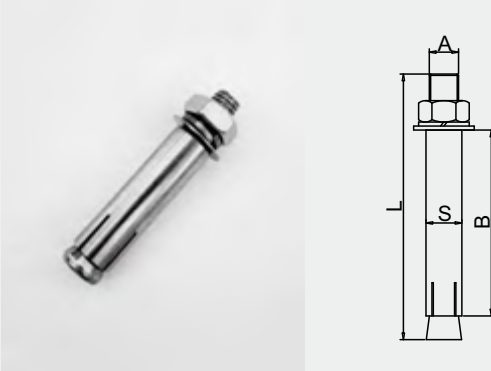
526 膨胀吊环螺栓 Expansion Anchors With Eye AISI304/AISI316
Bolzenanker mit Öse

Size	B	S	L	D
mm	mm	mm	mm	mm
M6	34-75	9.6	50-100	16
M8	40-79	11.5	60-120	20
M10	36-100	13.5	60-150	25
M12	54-100	17.8	80-150	30



527 膨胀螺栓 Expansion Anchors AISI304/AISI316
Bolzenanker

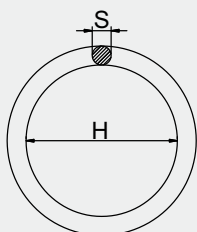
Size(A)	B	S	L
mm	mm	mm	mm
M6	34-75	9.6	50-100
M8	40-79	11.5	60-120
M10	36-100	13.5	60-150
M12	54-100	17.8	80-150
M16	49-100	19.6	80-150
M20	100-148	24.5	100-150



601

焊接圆环
Welded Round Ring
Ring, Geschweisst

AISI304/AISI316

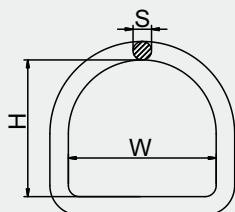


Size	S	H	WT	Size	S	H	WT
mm	mm	mm	kg	mm	mm	mm	kg
5×25	5	25	0.010	8×60	8	60	0.080
5×30	5	30	0.010	8×65	8	65	0.090
5×35	5	35	0.020	8×70	8	70	0.090
5×40	5	40	0.020	8×75	8	75	0.100
5×45	5	45	0.030	9×50	9	50	0.090
5×50	5	50	0.030	9×60	9	60	0.100
6×30	6	30	0.020	9×70	9	70	0.120
6×35	6	35	0.030	9×80	9	80	0.140
6×40	6	40	0.030	10×50	10	50	0.100
6×45	6	45	0.040	10×60	10	60	0.130
6×50	6	50	0.040	10×70	10	70	0.150
6×55	6	55	0.040	10×80	10	80	0.170
6×60	6	60	0.050	10×90	10	90	0.190
8×40	8	40	0.060	10×100	10	100	0.210
8×45	8	45	0.060				
8×50	8	50	0.070				
8×55	8	55	0.070				

602

焊接D型环
Welded D-Ring
D-Ring, Geschweisst

AISI304/AISI316

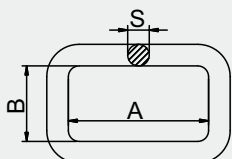


Size	S	W	H
mm	mm	mm	mm
3×25	3	25	22
4×25	4	25	22
4×30	4	30	27
5×30	5	30	27
5×40	5	40	37
6×40	6	40	37
6×50	6	50	47
8×40	8	40	37
8×50	8	50	47
10×50	10	50	47

603

焊接方形环
Welded Square Ring
Rechteck-Ring, Geschweisst

AISI304/AISI316



Size	S	A	B
mm	mm	mm	mm
3×15	3	15	9
4×15	4	15	9
4×20	4	20	12
5×20	5	20	12
5×25	5	25	15
5×30	5	30	18
5×40	5	40	21
6×40	6	40	21
6×50	6	50	25

604	环形销 Ring Pin Ringsplint	AISI304/AISI316	
		Size(H)	S
		mm	mm
		10	1.0
		11	1.0
		15	1.2
		18	1.5
		21	1.5
		26	1.8
		35	2.0



605	弹性开口销 Spring Cotter Pin Federstecker	AISI304/AISI316				
		Size(d)	D	B	L	L1
		mm	mm	mm	mm	mm
		2.25	9-11	20	42	24
		2.8	11-14	20	48	26
		3.6	14-20	20	64	32
		4.5	20-26	25	80	39
		5.6	26-34	25	97	45
		6.3	34-45	30	125	56
		7	45-56	30	150	63



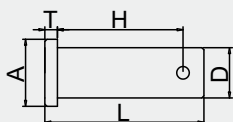
606	R型弹性开口销 Spring Cotter R Pin R-Federstecker	AISI304/AISI316				
		Size(d)	D	B	L	L1
		mm	mm	mm	mm	mm
		2.0	8-10	10	40	25
		2.5	10-16	11	46	24
		3.0	16-18	16	60	34
		4.0	18-20	19	64	36
		5.0	20-28	26	82	45
		6.0	28-40	30	110	56



607

平头销
Clevis Pin
Steckbolzen

AISI304/AISI316

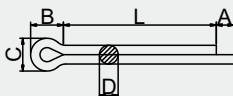


Size(D)	L	A	T	H
mm	mm	mm	mm	mm
5	21	8	2	16
6	24	9	2	19
8	26	11	2	21
10	28	13	3	22
12	38	16	3	30
15	48	22	3	40

608

开口销
Cotter Pins
Splinte

AISI304/AISI316

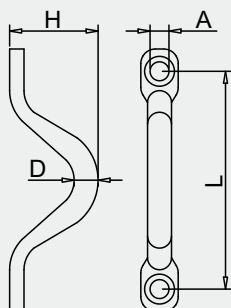


Size	D(max)	C(max)	B	A(max)	L
mm	mm	mm	mm	mm	mm
0.6	0.5	1	2	1.6	4-12
0.8	0.7	1.4	2.4	1.6	5-16
1	0.9	1.8	3	1.6	6-20
1.2	1	2	3	2.5	8-26
1.6	1.4	2.8	3.2	2.5	8-32
2	1.8	3.6	4	2.5	10-40
2.5	2.3	4.6	5	2.5	12-50
3.2	2.9	5.8	6.4	3.2	14-65
4	3.7	7.4	8	4	18-80
5	4.6	9.2	10	4	22-100
6.3	5.9	11.8	12.6	4	30-120
8	7.5	15	16	4	40-160
10	9.5	19	20	6.3	45-200
12	11.4	24.8	26	6.3	70-200

701

线式骆驼背
Wire Eye Strap
Fenderöse

AISI304/AISI316

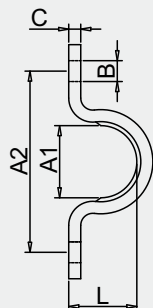


Size(ΦD)	A	H	L
mm	mm	mm	mm
4	3.2	16	32
5	4.2	17.5	40
6	5.2	22.5	45
8	5.2	23	50
10	8.2	28	62

702

板式骆驼背
Flat Eye Strap
Flachbügel

AISI304/AISI316

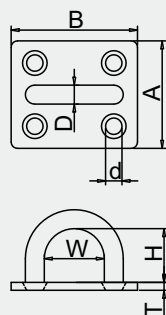


Size	L	A1	A2	B	C	WT
mm	mm	mm	mm	mm	mm	kg
10×11	10	11	30	4.2	1.5	0.004
13×15	13	15	34	5.2	2	0.010
17×20	17	20	40	5.2	3	0.020

703

方形眼板
Eye Plate
Decksplatte

AISI304/AISI316



Size(ΦD)	A	B	d	W	H	T	WT
mm	mm	mm	mm	mm	mm	mm	kg
4	25	28	3	11.5	10	2	0.013
5	30	35	4.2	15	12	2.5	0.023
6	35	40	5.2	19	17	2.5	0.035
8	40	50	5.2	22	21	3	0.065
10	42	58	5.2	28	24	4	0.105
12	54	75	5.8	36	31	4.8	0.224
14	60	85	8	40	38	5	0.327
16	65	95	10	45	43	6	0.473

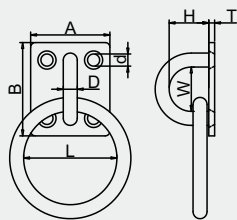


704

带环方形眼板
Eye Plate With Round Ring
Decksplatte mit Ring

AISI304/AISI316

Size(ΦD)	A	B	d	W	H	T	L	WT
mm	mm	mm	mm	mm	mm	mm	mm	kg
4	25	28	3	11.5	10	2	30	0.023
5	30	35	4.2	15	12	2.5	30	0.039
6	35	40	5.2	19	17	2.5	40	0.066
8	40	50	5.2	22	21	3	50	0.135
10	42	58	5.2	28	24	4	50	0.202
12	54	75	5.8	36	31	4.8	60	0.430

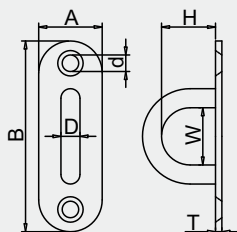


705

椭圆眼板
Pad Eye
Mastplatte

AISI304/AISI316

Size(ΦD)	A	B	d	W	H	T	WT
mm	mm	mm	mm	mm	mm	mm	kg
3	9	27	2.2	9.5	7	1.8	0.004
4	12	36	3.2	12.5	10	1.8	0.008
5	15	45	4.2	14	12.5	2	0.015
6	20	60	5.2	18	17	2	0.027
8	26	80	5.2	23	21	3	0.067
9	32	100	6.2	25	26	3	0.104

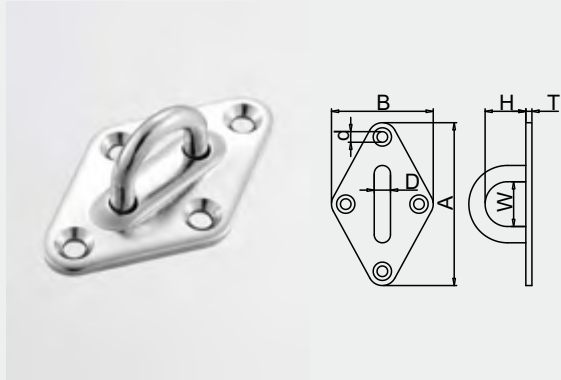


706

菱形眼板
Dimond Eye Plate
Augplatte

AISI304/AISI316

Size(ΦD)	A	B	H	W	T	d	WT
mm	mm	mm	mm	mm	mm	mm	kg
5	60	37	13	15	2.5	4.2	0.032
6	65	40	18	20	2.5	5.2	0.044
8	80	50	20	22	3	5.2	0.075

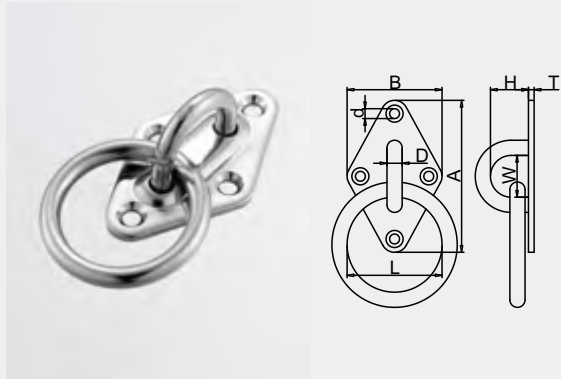


707

带环菱形眼板
Dimond Eye Plate With Ring
Augplatte mit Ring

AISI304/AISI316

Size(ΦD)	A	B	H	W	T	d	L	WT
mm	mm	mm	mm	mm	mm	mm	mm	kg
5	60	37	13	15	2.5	4.2	30	0.050
6	65	40	18	20	2.5	5.2	35	0.072
8	80	50	20	22	3	5.2	50	0.142

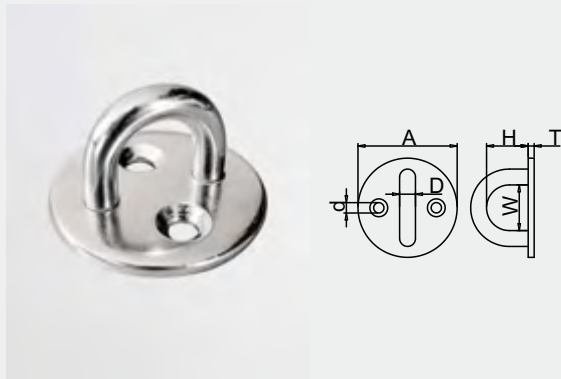


708

圆形眼板
Round Eye Plate
Augplatte, Rund

AISI304/AISI316

Size(ΦD)	A	H	W	T	d	WT
mm	mm	mm	mm	mm	mm	kg
5	33	12	14	2.5	4.2	0.020
6	40	17	19	2.5	5.2	0.035
8	50	21	23	3	5.2	0.070

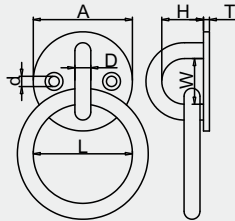


709

带环圆形眼板
Round Eye Plate With Ring
Augplatte, Rund mit Ring

AISI304/AISI316

Size(ΦD)	A	H	W	T	d	L	WT
mm	mm	mm	mm	mm	mm	mm	kg
5	33	12	14	2.5	4.2	30	0.038
6	40	17	19	2.5	5.2	40	0.067
8	50	21	23	3	5.2	50	0.141

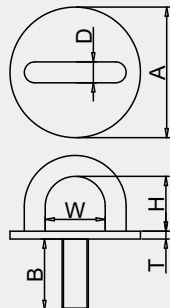


710

带螺杆圆形眼板
Round Eye Plate With Thread
Augplatte, Rund mit Gewinde

AISI304/AISI316

Size(ΦD)	A	H	W	T	B	Thread	WT
mm	mm	mm	mm	mm	mm	mm	kg
5	33	13	14	2.5	19	M6	0.035
6	40	19	18	2.5	20	M8	0.060
8	50	20	22	3	27	M10	0.114

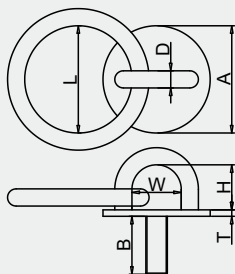


711

带螺杆带环圆形眼板
Round Eye Plate With Thread And Ring
Augplatte, Rund mit Gewinde und Ring

AISI304/AISI316

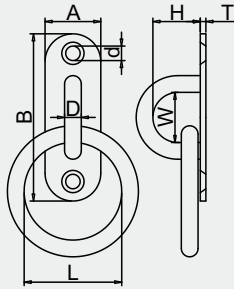
Size(ΦD)	A	H	W	T	B	L	Thread	WT
mm	mm	mm	mm	mm	mm	mm	mm	kg
5	33	13	14	2.5	19	30	M6	0.035
6	40	19	18	2.5	20	35	M8	0.060
8	50	20	22	3	27	40	M10	0.114



712

带环椭圆眼板
Pad Eye With Round Ring
Mastplatte mit Ring

AISI304/AISI316

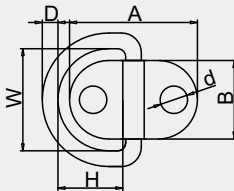


Size(ΦD)	A	B	d	W	H	T	L	WT
mm	mm	mm	mm	mm	mm	mm	mm	kg
3	9	27	2.2	9.5	7	1.8	25	0.009
4	12	36	3.2	12.5	10	1.8	30	0.019
5	15	45	4.2	14	12.5	2	30	0.031
6	20	60	5.2	18	17	2	40	0.060
8	26	80	5.2	23	21	3	50	0.142
9	32	100	6.2	25	26	3	60	0.211

713

折叠眼板
Folding Pad Eye
Klappauge

AISI304/AISI316

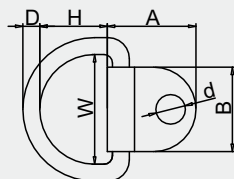


Size(D)	A	B	H	W	d	WT
mm	mm	mm	mm	mm	mm	kg
2	17	10	10	13	3.8	0.002
3	30	15	17	21	4.8	0.007
4	34	20	18	26	6.8	0.015

714

单折叠眼板
Single Folding Pad Eye
Einzelne Klappauge

AISI304/AISI316



Size(D)	A	B	H	W	d	WT
mm	mm	mm	mm	mm	mm	kg
2	11	10	10	13	3.8	0.002
3	18	15	17	21	4.8	0.007
4	21	20	18	26	6.8	0.015

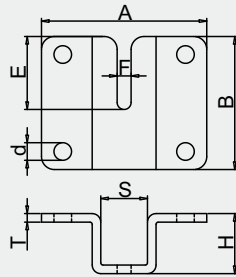
715

链条挂板(脱卸式)

Chain Holder
Stahlkettehalter

AISI304/AISI316

ChainΦ	A	B	E	F	H	S	T	d	WT
mm	mm	mm	mm	mm	mm	mm	mm	mm	kg
4	55	32	21	4.5	18	18	3	5.2	0.049
5	63	54	30	5.5	24	20	4	6.2	0.142
6	77	62	34	6.5	28	25	4	8.2	0.196



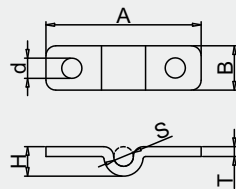
716

链条挂板(固定式)

Chain Holder
Stahlkettehalter

AISI304/AISI316

ChainΦ	A	B	H	S	T	d	WT
mm	mm	mm	mm	mm	mm	mm	kg
4	53	15	8	5	3	5.2	0.016
5	56	17	9.5	5.5	4	6.2	0.027
6	63	18	12	8	4	8.2	0.033



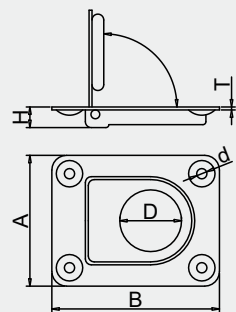
717

地板钩

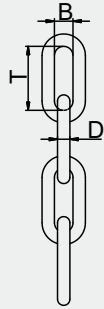
Ring Pull
Einlassgriff

AISI304/AISI316

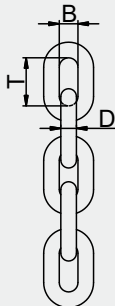
Size(A)	B	D	H	T	d	WT
mm	mm	mm	mm	mm	mm	kg
44	57	21	8	1	3.5	0.031
56	66	28	9	1	4	0.045



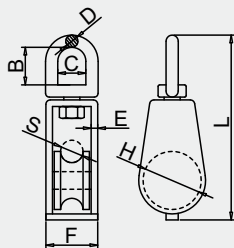
718	链条 Chain Rundstahlkette	AISI304/AISI316			
		Size(D)	B	T	WT
		mm	mm	mm	kg/m
		1.2	3.3	10	0.025
		1.5	3.5	12	0.036
		2	4	13	0.070
		2.5	6	19	0.120
		3	6	24	0.150
		4	7.5	27	0.270
		5	8	27	0.440
		6	9	31	0.650
		8	11	40	1.180
		10	15	42	1.950
		12	20	54	2.770
		14	22	64	3.650
		16	27	72	4.830



719	短环链条 Short Link Chain Rundstahlkette, Kurzgliedrig	AISI304/AISI316			
		Size(D)	B	T	WT
		mm	mm	mm	kg/m
		3	4.2	16	0.165
		4	5	16	0.300
		5	6	18.5	0.500
		6	7.2	18.5	0.800
		8	9.6	24	1.400



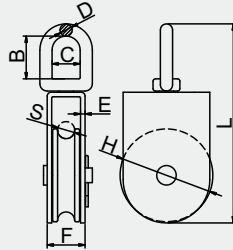
720	单滑轮 Single Block Einzelneblock	AISI304/AISI316								
		Size(H)	B	C	D	S	F	E	L	WT
		mm	mm	mm	mm	mm	mm	mm	mm	kg
		25	19	14	6	10	22	3	88	0.137
		32	19	14	6	10	24	3	96	0.187
		50	26	10	8	15	28	3	127	0.352



721

单滑轮带开口销
Single Block With Split Pin
Einzelneblock mit Splinte

AISI304/AISI316

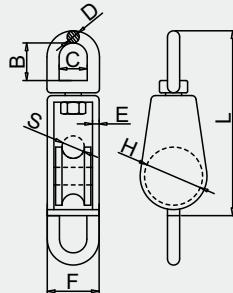


Size(H)	B	C	D	S	F	E	L
mm	mm	mm	mm	mm	mm	mm	mm
75	35	23	10	15	32	4	165
100	38	25	12	18	38	4	198

722

单滑轮带环
Single Block With Ring
Einzelneblock mit Ring

AISI304/AISI316

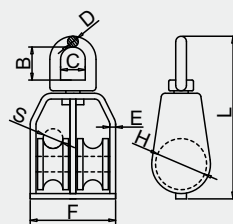


Size(H)	B	C	D	S	F	E	L
mm	mm	mm	mm	mm	mm	mm	mm
25	19	14	6	10	22	3	88
32	19	14	6	10	24	3	96
50	26	10	8	15	28	3	127

723

双滑轮
Double Block
Doppelblock

AISI304/AISI316

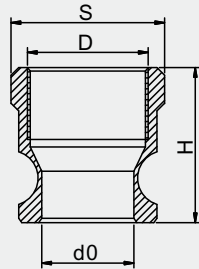


Size(H)	B	C	D	S	F	E	L
mm	mm	mm	mm	mm	mm	mm	mm
25	19	14	6	10	46	3	88
32	19	14	6	10	49	3	96
50	26	10	8	15	56	3	127

801

A型接头
Female Adapter
Camlock Kupplung Weiblich

AISI304/AISI316

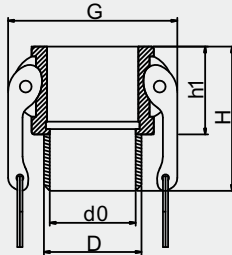


Size	d0	D(Rc)	H	S
mm	mm	inch	mm	mm
15	21	1/2	38	33
20	21	3/4	38	33
25	24	1	47	40
32	29	1-1/4	54	50
40	37	1-1/2	54	55
50	46	2	63	67
65	57	2-1/2	79	83
80	75	3	72	98
100	98	4	79	125
125	122	5	85	154
150	150	6	86	190

802

B型接头
Male Coupler
Cam Koppler männlich

AISI304/AISI316

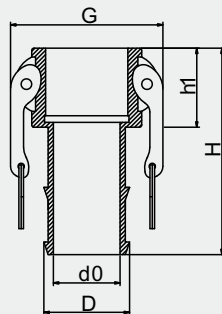


Size	d0	D(Rc)	H	h1	G
mm	mm	inch	mm	mm	mm
15	14	1/2	52	33	53
20	19	3/4	52	33	53
25	25	1	61	39	62
30	30	1-1/4	68	45	80
40	38	1-1/2	71	47	87
50	50	2	78	50	97
65	63	2-1/2	86	55	110
80	75	3	87	56	135
100	100	4	89	58	165
125	122	5	102	60	185
150	145	6	118	72	220

803

C型接头
Shank Coupler
Cam Koppler Verzahnte

AISI304/AISI316



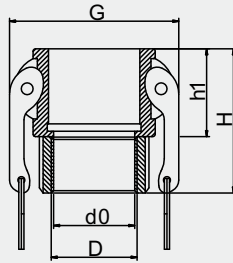
Size	d0	D	H	h1	G
mm	mm	mm	mm	mm	mm
15	14	20	86	33	53
20	14	20	86	33	53
25	20	26	95	39	62
32	25	33	105	45	80
40	32	40	111	47	87
50	43	52	130	52	97
65	55	65	145	55	110
80	67	77	160	56	135
100	92	103	170	58	165
125	115	130	187	62	185
150	140	155	214	72	220

804

D型接头

Female Coupler
Cam Koppler Weiblich

AISI304/AISI316



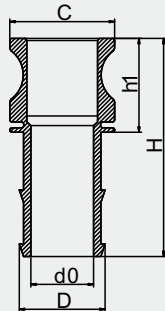
Size	d0	D(Rc)	H	h1	G
mm	mm	inch	mm	mm	mm
15	17	1/2	50	33	53
20	20	3/4	51	33	53
25	25	1	61	39	62
32	32	1-1/4	68	45	80
40	40	1-1/2	69	48	87
50	50	2	77	52	97
65	63	2-1/2	84	55	110
80	75	3	87	56	135
100	100	4	90	58	165
125	122	5	102	62	185
150	145	6	118	72	220

805

E型接头

Shank Adapter
Camlock Kupplung Verzahnte

AISI304/AISI316



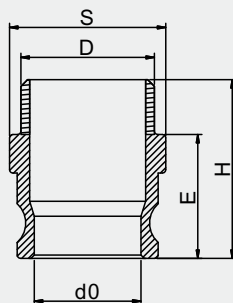
Size	d0	C	H	D	h1
mm	mm	mm	mm	mm	mm
15	14	33	50	20	40
20	14	33	51	20	40
25	20	38	61	26	46
32	25	48	68	33	52
40	31	55	69	39	56
50	43	65	77	52	62
65	55	80	84	65	65
80	67	102	87	77	66
100	92	132	90	102	68
125	115	154	102	130	71
150	140	184	118	155	78

806

F型接头

Male Adapter
Camlock Kupplung männlich

AISI304/AISI316



Size	d0	D(Rc)	H	S	E
mm	mm	inch	mm	mm	mm
15	21	1/2	56	33	38
20	21	3/4	56	33	38
25	25	1	69	40	46
32	30	1-1/4	75	48	51
40	36	1-1/2	78	55	54
50	46	2	86	66	60
65	57	2-1/2	97	82	68
80	73	3	106	98	73
100	98	4	114	125	78
125	122	5	121	154	81
150	148	6	130	190	86

807	DP型接头 Dust Plug Staubstecker	AISI304/AISI316			
		Size	d0	H	h1
		mm	mm	mm	mm
		15	21	36	26
		20	21	36	26
		25	24	39	31
		32	29	49	38
		40	37	51	40
		50	46	60	46
		65	57	59	48
		80	75	67	55
		100	98	80	56
		125	122	80	56
		150	150	98	66



808	DC型接头 Dust Cap Staubschutzkappe	AISI304/AISI316			
		Size	G	H	h1
		mm	mm	mm	mm
		15	53	45	35
		20	53	45	35
		25	62	50	40
		32	80	57	47
		40	87	60	50
		50	97	68	55
		65	110	70	58
		80	135	75	60
		100	165	80	62
		125	185	94	70
		150	220	112	82



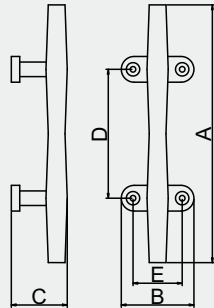
809	管卡 Coupling Kupplung	AISI304/AISI316					
		Size	A	B	E	H	WT
		mm	mm	mm	mm	mm	kg
		DN20	81	41	9	25	0.260
		DN25	95	43	10	29	0.370
		DN32	100	43	12	32	0.370
		DN40	116	43	12	35	0.500
		DN50	124	43	12	42	0.650
		DN65	145	43	12	49	0.735
		DN80	170	46	12	58	1.000
		DN100	200	49	12	72	1.520



810

圆索栓
Hollow Base Cleat
Belegklampe Rund

AISI304/AISI316

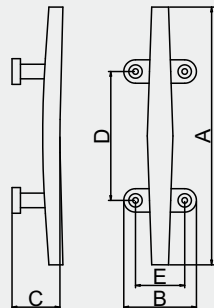


Size	A	B	C	D	E
inch	mm	mm	mm	mm	mm
4"	102	36	25	48	22
5"	127	40	27	51	25
6"	152	46	31	57	26
8"	203	54	41	76	36
10"	254	65	50	90	44
12"	305	71	53	99	49

811

扁索栓
Low Flat Cleat
Belegklampe Flach

AISI304/AISI316



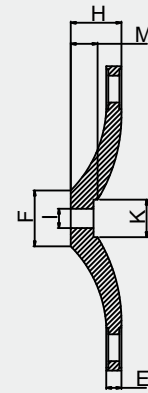
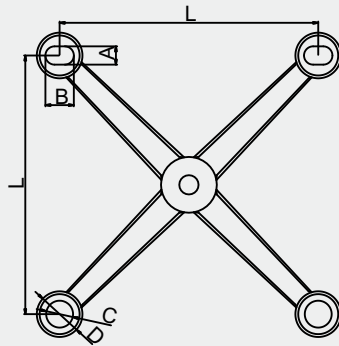
Size	A	B	C	D	E
inch	mm	mm	mm	mm	mm
5"	124	46	25	41	29
6"	148	56	28	40	39
8"	198	62	31	49	44
10"	254	63	40	57	45



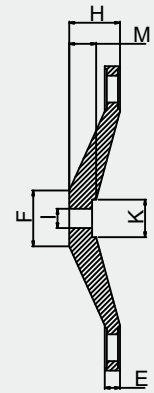
901

驳接爪四爪
Spider With 4 Arms
Spinne mit 4 Arme

AISI304/AISI316



L=200mm



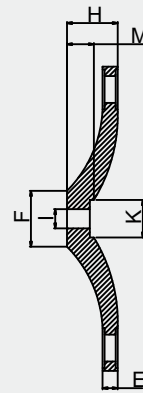
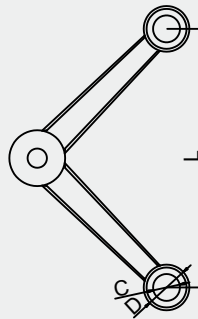
L=220-300mm

Size	L	A	B	H	M	E	D	C	F	I	K
mm	mm	mm	mm	mm	mm	mm	mm	mm	mm	mm	mm
200	200	18	28	50	24	12	45	26	45	18	37
220	220	18	28	50	25	14	45	26	50	18	37
250	250	18	28	50	25	15	45	26	50	18	37
300	300	18	28	50	32	18	45	26	60	20	37

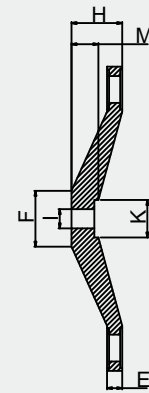
902

驳接爪两爪90°
Spider With 2 Arms 90°
Spinne mit 2 Arme 90

AISI304/AISI316



L=200mm



L=220-300mm

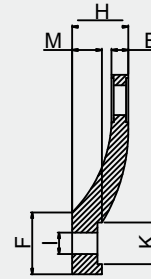
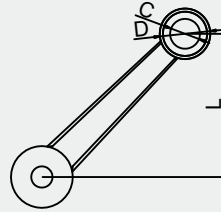
Size	L	H	M	E	D	C	F	I	K
mm	mm	mm	mm	mm	mm	mm	mm	mm	mm
200	200	50	24	12	45	26	45	18	37
220	220	50	25	14	45	26	50	18	37
250	250	50	25	15	45	26	50	18	37
300	300	50	32	18	45	26	60	20	37

903

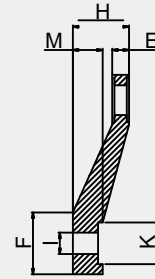
驳接爪长单

Spider With One Long Arm
Spinne mit einem langen Arm

AISI304/AISI316



L=200mm



L=220-300mm

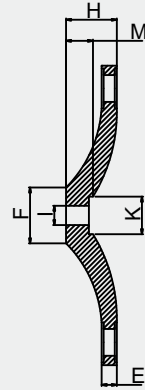
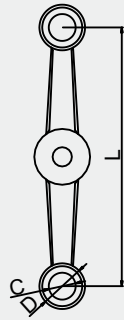
Size	L	H	M	E	D	C	F	I	K
mm	mm	mm	mm	mm	mm	mm	mm	mm	mm
200	100	50	24	12	45	26	45	18	37
220	110	50	25	14	45	26	50	18	37
250	125	50	25	15	45	26	50	18	37
300	150	50	32	18	45	26	60	20	37



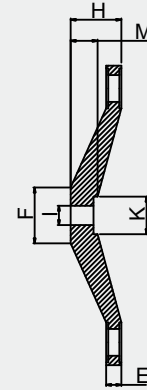
904

驳接爪两爪180°
Spider With 2 Arms 180°
Spinne mit 2 Arme 180°

AISI304/AISI316



L=200mm



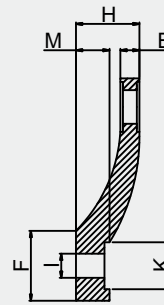
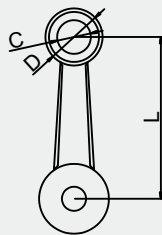
L=220-300mm

Size	L	H	M	E	D	C	F	I	K
mm	mm	mm	mm	mm	mm	mm	mm	mm	mm
200	200	50	24	12	45	26	45	18	37
220	220	40	25	14	45	26	50	18	37
250	250	40	25	15	45	26	50	18	37
300	300	50	32	18	45	26	60	20	37

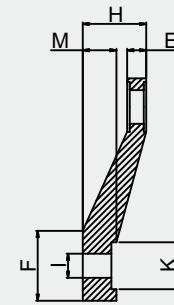
905

驳接爪短单
Spider With One Short Arm
Spinne mit einem kurzen Arm

AISI304/AISI316



L=200mm



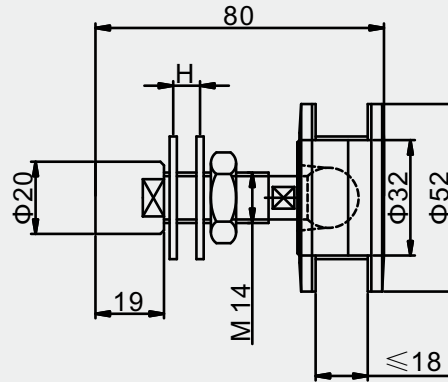
L=220-300mm

Size	L	H	M	E	D	C	F	I	K
mm	mm	mm	mm	mm	mm	mm	mm	mm	mm
200	100	50	24	12	45	26	45	18	37
220	110	40	25	14	45	26	50	18	37
250	125	40	25	15	45	26	50	18	37
300	150	50	32	18	45	26	60	20	37

906

驳接头
Routel
Spinne Routel

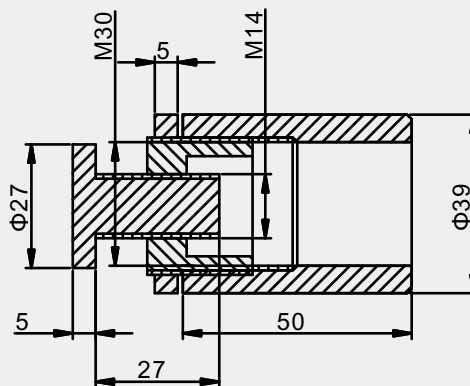
AISI304/AISI316

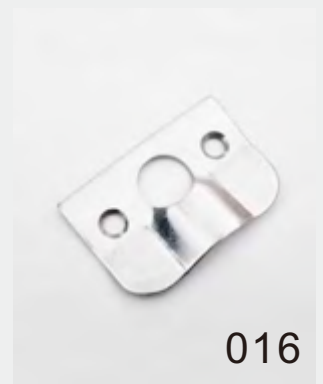
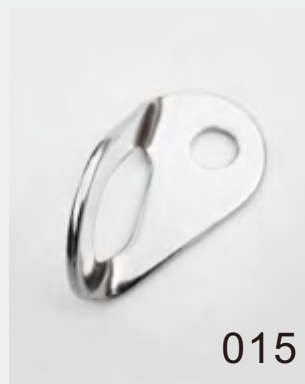
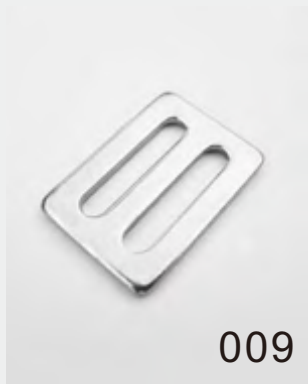
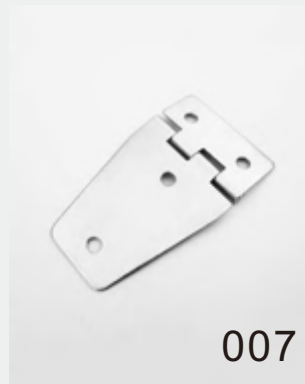
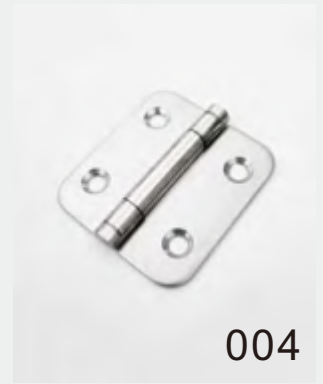
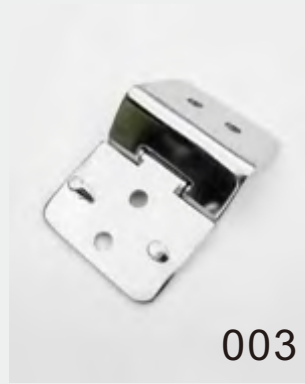


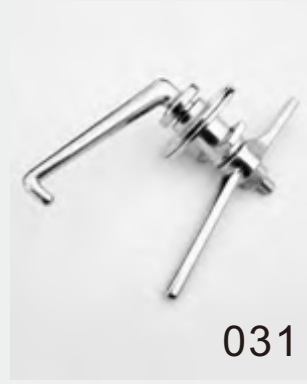
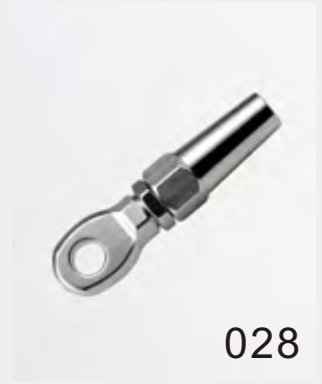
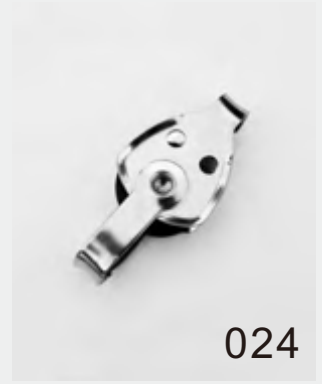
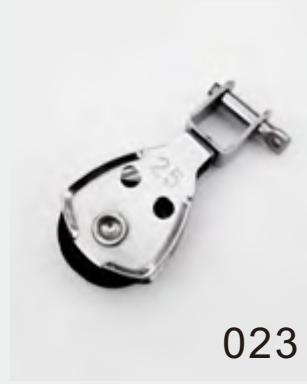
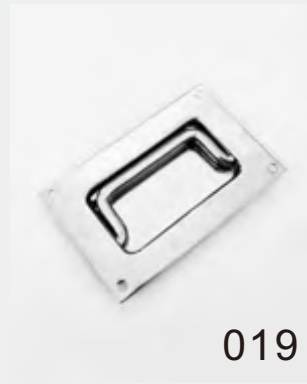
907

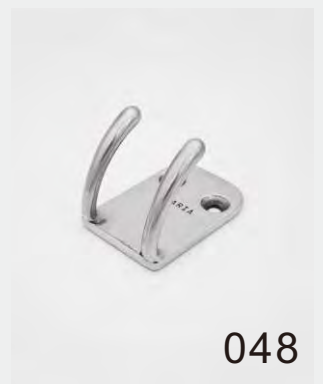
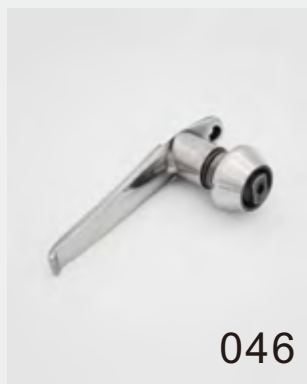
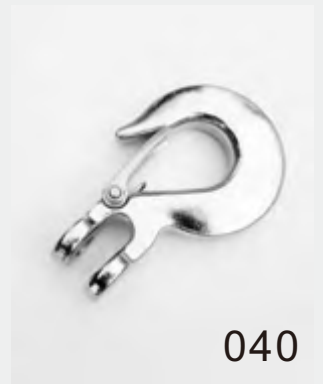
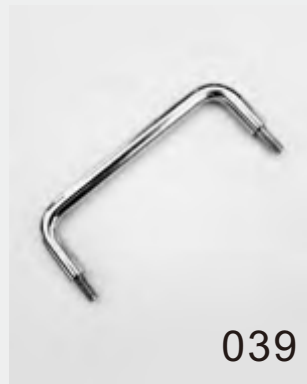
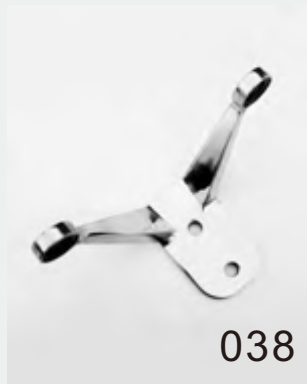
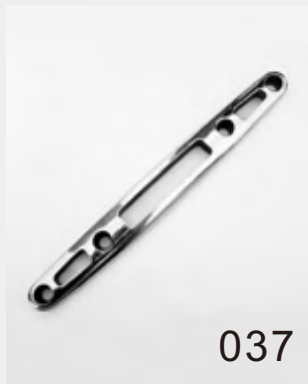
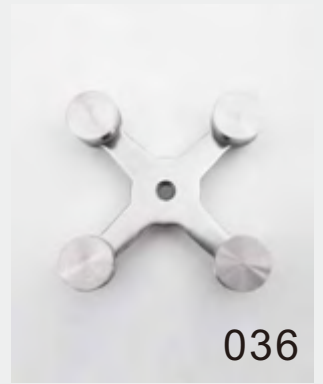
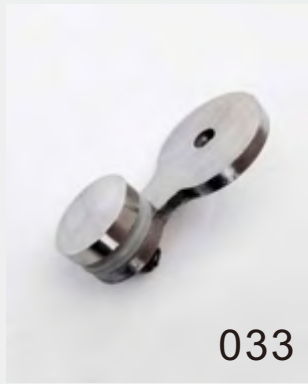
转接件
Connector
Steckverbinder

AISI304/AISI316











049



050



051



052



053



054



055



056



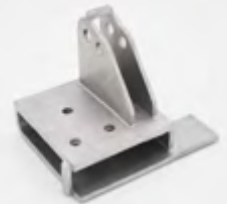
057



058



059



060



061



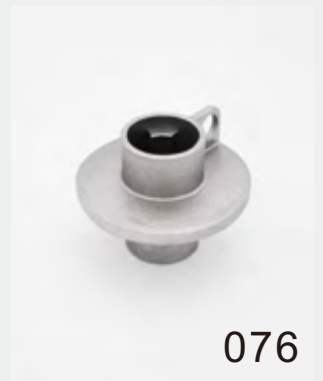
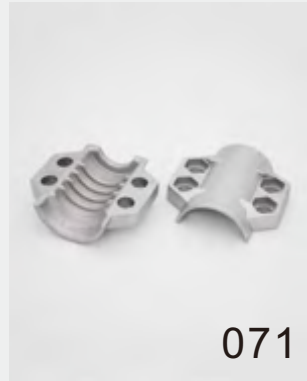
062

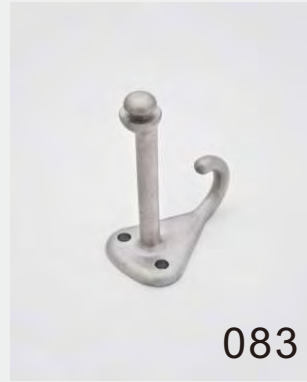


063



064







天津安森不锈钢制品有限公司

Tianjin Anson Stainless Steel Products Co., Ltd

Email: info@ansoncranes.com

Phone: +86 185 0372 2332

Tel: 0086 372 5965148

Fax: 0086 372 5951936

Http: [//www.ansonindustry.com](http://www.ansonindustry.com)

Add: B-207, No.65, East Road, Xin Cheng, Development Zone, Tianjin, P.R.C.

